

**Lower Thames Crossing
6.2 Environmental Statement
Figure 7.19 - Photomontages
Winter Year 1 and Summer
Year 15 (1 of 4)
(Clean version)**

APFP Regulation 5(2)(a)

Infrastructure Planning (Applications:
Prescribed Forms and Procedure)
Regulations 2009

Volume 6

**DATE: December 2023
DEADLINE: 9**

Planning Inspectorate Scheme Ref: TR010032
Application Document Ref: TR010032/APP/6.2

VERSION: 5.0

Revision History

| Version | Date | Submitted at |
|---------|------------------|-----------------|
| 1.0 | 31 October 2022 | DCO Application |
| 2.0 | 24 August 2023 | Deadline 3 |
| 3.0 | 03 October 2023 | Deadline 5 |
| 4.0 | 31 October 2023 | Deadline 6 |
| 5.0 | 11 December 2023 | Deadline 9 |

Lower Thames Crossing

6.2 Environmental Statement

Figure 7.19 - Photomontages Winter Year 1 and Summer Year 15 (1 of 4) (Clean version)

List of contents

| | Page number |
|---|--------------------|
| 1 Photomontages | 1 |
| 1.1 Introduction | 1 |
| 1.2 Schedule of Representative Viewpoints included in this application document | 1 |

1 Photomontages

1.1 Introduction

- 1.1.1 For each Representative Viewpoint, the following photography and photomontage views have been provided:
- Baseline photography – Winter
 - Corresponding photomontage – Year 1 (opening year)
 - Baseline photography – Summer
 - Corresponding photomontage – Year 15 (design year)

1.2 Schedule of Representative Viewpoints included in this application document

- 1.1.2 Baseline photography and photomontages have been included for the following Representative Viewpoints within this part of Figure 7.19:

Part One of Figure 7.19: South of the River Thames

- S-03 - View from the Kent Downs AONB on footpath NS161, north of Park Pale, east of Shorne Woods Country Park
- S-05a - View from the Kent Downs AONB on Park Pale overbridge
- S-11 - View from the Kent Downs AONB on footpath NS179 within Cobham Hall Grade II* Registered Park and Garden
- S-12 - View from the Kent Downs AONB on Brewers Road
- S-13 - View from the Kent Downs AONB on Brewers Road overbridge
- S-14 - View from the Kent Downs AONB on Brewers Road overbridge
- S-17 - View from the Kent Downs AONB on Thong Lane
- S-18 - View from the Kent Downs AONB on the HS1 green bridge
- S-20a - View from Jeskyns Community Woodland
- S-22 - View from Watling Street on the A2 overbridge



| P01 | S9 | 20/09/2023 | Deadline 5 | BB | SK | BF |
|-----|--------|------------|---------------------|-------|--------|---------|
| Rev | Status | Rev. Date | Purpose of revision | Drawn | Chck'd | Apprv'd |

For location see Figure 7.16 - Visual Effects Drawing with Representative Viewpoint and Photomontage Locations

| | | | |
|----------------------------------|--|---|-------------|
| Winter Viewpoint: | S-03 | | |
| Date and Time: | 05/03/2019 11:54 | | |
| Camera: | Canon EOS 6D MkII | Visualisation Type: | Type 3 |
| Lens: | Canon EF 50mm f/1.8 STM | Projection Type: | Cylindrical |
| Equipment: | Manfrotto MA 454 Micro Positioning Plate | Enlargement Factor: | 1.5 |
| | Manfrotto SBH-100 Ball Head | Horizontal FOV: | 56.5° |
| FL, Max Aperture: | 50mm, 1.75 | Distance to Order Limits: | 0m |
| Tripod Height: | 1.5m | View Direction (Centre of View): | SSE |
| Viewpoint Ground Height: | 86.7m AOD | GPS Accuracy: | 5m |
| Viewpoint Grid Reference: | 569530E, 169900N | | |



LOWER THAMES CROSSING
 5th Floor Beaufort House
 15 St Botolph Street
 London EC3A 7DT

Project: LOWER THAMES CROSSING
Drawing title: Figure 7.19
 Baseline Photography - Viewpoint S-03
 Winter Year 1
 Sheet 1 of 4

| | | | | | | | |
|---|----|-------------|------------|--|----|-----------------|-----|
| Drawn | BB | Date | 20/09/2023 | Status | S9 | Revision | P01 |
| Checked | SK | Date | 20/09/2023 | | | | |
| Approved | BF | Date | 20/09/2023 | | | | |
| Drawing number | | | | HE540039-CJV-ELS-SZP_ZZ000000_Z-DR-LV-00325A | | | |
| Application Document No. TR010032/APP/6.2 | | | | | | | |



| | | | | | | |
|-----|--------|------------|---------------------|-------|--------|---------|
| P02 | S9 | 10/11/2023 | Deadline 9 | BB | SK | BF |
| P01 | S9 | 20/09/2023 | Deadline 5 | BB | SK | BF |
| Rev | Status | Rev. Date | Purpose of revision | Drawn | Chck'd | Apprv'd |

For location see Figure 7.16 - Visual Effects Drawing with Representative Viewpoint and Photomontage Locations

| | | | | | |
|--|--------------------------|--|---|---|--|
| Winter Viewpoint: Date and Time: | S-03 05/03/2019 11:54 | Camera: Canon EOS 6D MkII Lens: Canon EF 50mm f/1.8 STM Equipment: Manfrotto MA 454 Micro Positioning Plate Manfrotto SBH-100 Ball Head | Visualisation Type: Type 3 Projection Type: Cylindrical Enlargement Factor: 1.5 Horizontal FOV: 56.5° | FL, Max Aperture: 50mm, 1.75 Tripod Height: 1.5m Viewpoint Ground Height: 86.7m AOD Viewpoint Grid Reference: 569530E, 169900N | Distance to Order Limits: 0m View Direction (Centre of View): SSE GPS Accuracy: 5m |
|--|--------------------------|--|---|---|--|



Client
LOWER THAMES CROSSING
5th Floor Beaufort House
15 St Botolph Street
London EC3A 7DT

Project
LOWER THAMES CROSSING
Drawing title
Figure 7.19
Photomontage - Viewpoint S-03
Winter Year 1
Sheet 1 of 4

| | | | | | | | |
|-----------------|----|-------------|------------|--|----|-----------------|-----|
| Drawn | BB | Date | 10/11/2023 | Status | S9 | Revision | P02 |
| Checked | SK | Date | 10/11/2023 | Application Document No. TR010032/APP/6.2 | | | |
| Approved | BF | Date | 10/11/2023 | Drawing number HE540039-CJV-ELS-SZP_ZZ000000_Z-DR-LV-00325 | | | |



| P01 | S9 | 20/09/2023 | Deadline 5 | BB | SK | BF |
|-----|--------|------------|---------------------|-------|--------|---------|
| Rev | Status | Rev. Date | Purpose of revision | Drawn | Chck'd | Apprv'd |

For location see Figure 7.16 - Visual Effects Drawing with Representative Viewpoint and Photomontage Locations

| | | | |
|----------------------------------|--|---|------------------|
| Winter Viewpoint: | S-03 | Date and Time: | 05/03/2019 11:54 |
| Camera: | Canon EOS 6D MkII | Visualisation Type: | Type 3 |
| Lens: | Canon EF 50mm f/1.8 STM | Projection Type: | Cylindrical |
| Equipment: | Manfrotto MA 454 Micro Positioning Plate | Enlargement Factor: | 1.5 |
| | Manfrotto SBH-100 Ball Head | Horizontal FOV: | 56.5° |
| FL, Max Aperture: | 50mm, 1.75 | Distance to Order Limits: | 0m |
| Tripod Height: | 1.5m | View Direction (Centre of View): | SSE |
| Viewpoint Ground Height: | 86.7m AOD | GPS Accuracy: | 5m |
| Viewpoint Grid Reference: | 569530E, 169900N | | |



LOWER THAMES CROSSING
 5th Floor Beaufort House
 15 St Botolph Street
 London EC3A 7DT

Project LOWER THAMES CROSSING
Drawing title Figure 7.19
 Baseline Photography - Viewpoint S-03
 Winter Year 1
 Sheet 2 of 4

| | | | | | | | |
|--|----|-------------|------------|--|----|-----------------|-----|
| Drawn | BB | Date | 20/09/2023 | Status | S9 | Revision | P01 |
| Checked | SK | Date | 20/09/2023 | Application Document No. TR010032/APP/6.2 | | | |
| Approved | BF | Date | 20/09/2023 | Drawing number | | | |
| HE540039-CJV-ELS-SZP_ZZ000000_Z-DR-LV-00326A | | | | | | | |



| | | | | | | |
|-----|--------|------------|---------------------|-------|--------|---------|
| P02 | S9 | 10/11/2023 | Deadline 9 | BB | SK | BF |
| P01 | S9 | 20/09/2023 | Deadline 5 | BB | SK | BF |
| Rev | Status | Rev. Date | Purpose of revision | Drawn | Chck'd | Apprv'd |

| | | | | | | | |
|--|--|--------------------------|------------------|---------------------------|------------------|---------------------------|-----|
| For location see Figure 7.16 - Visual Effects Drawing with Representative Viewpoint and Photomontage Locations | | Winter Viewpoint: | S-03 | | | | |
| | | Date and Time: | 05/03/2019 11:54 | | | | |
| Camera: | Canon EOS 6D MkII | Visualisation Type: | Type 3 | FL, Max Aperture: | 50mm, 1.75 | Distance to Order Limits: | 0m |
| Lens: | Canon EF 50mm f/1.8 STM | Projection Type: | Cylindrical | Tripod Height: | 1.5m | View Direction | SSE |
| Equipment: | Manfrotto MA 454 Micro Positioning Plate | Enlargement Factor: | 1.5 | Viewpoint Ground Height: | 86.7m AOD | (Centre of View): | SSE |
| | Manfrotto SBH-100 Ball Head | Horizontal FOV: | 56.5° | Viewpoint Grid Reference: | 569530E, 169900N | GPS Accuracy: | 5m |



LOWER THAMES CROSSING
 5th Floor Beaufort House
 15 St Botolph Street
 London EC3A 7DT

| | |
|---------------|---|
| Project | LOWER THAMES CROSSING |
| Drawing title | Figure 7.19 Photomontage - Viewpoint S-03 Winter Year 1 Sheet 2 of 4 |

| | | | | |
|----------------|----|---|---|----------|
| Drawn | BB | Date - 10/11/2023 | Status | Revision |
| Checked | SK | Date - 10/11/2023 | S9 | P02 |
| Approved | BF | Date - 10/11/2023 | Application Document No. TR010032/APP/6.2 | |
| Drawing number | | HE540039-CJV-ELS-SZP_ZZ000000_Z-DR-LV-00326 | | |



| P01 | S9 | 20/09/2023 | Deadline 5 | BB | SK | BF |
|-----|--------|------------|---------------------|-------|--------|---------|
| Rev | Status | Rev. Date | Purpose of revision | Drawn | Chck'd | Apprv'd |

| | | | | | | | |
|--|--|--------------------------|------------------|---------------------------|------------------|------------------------------|-----------------------|
| For location see Figure 7.16 - Visual Effects Drawing with Representative Viewpoint and Photomontage Locations | | Summer Viewpoint: | S-03 | | | | |
| | | Date and Time: | 28/05/2019 16:50 | | | | |
| Camera: | Canon EOS 6D MkII | Visualisation Type: | Type 3 | FL, Max Aperture: | 50mm, 1.75 | Distance to Order Limits: | 0m |
| Lens: | Canon EF 50mm f/1.8 STM | Projection Type: | Cylindrical | Tripod Height: | 1.5m | View Direction | (Centre of View): SSE |
| Equipment: | Manfrotto MA 454 Micro Positioning Plate | Enlargement Factor: | 1.5 | Viewpoint Ground Height: | 86.7m AOD | Projection (Centre of View): | SSE |
| | Manfrotto SBH-100 Ball Head | Horizontal FOV: | 56.5° | Viewpoint Grid Reference: | 569530E, 169900N | GPS Accuracy: | 5m |



LOWER THAMES CROSSING
 5th Floor Beaufort House
 15 St Botolph Street
 London EC3A 7DT

Project: LOWER THAMES CROSSING
 Drawing title: Figure 7.19
 Baseline Photography - Viewpoint S-03
 Summer Year 15
 Sheet 3 of 4

| | | | | | | |
|---|----|-------------------|--|----|----------|-----|
| Drawn | BB | Date - 20/09/2023 | Status | S9 | Revision | P01 |
| Checked | SK | Date - 20/09/2023 | | | | |
| Approved | BF | Date - 20/09/2023 | | | | |
| Drawing number | | | HE540039-CJV-ELS-SZP_ZZ000000_Z-DR-LV-00327A | | | |
| Application Document No. TR010032/APP/6.2 | | | | | | |



| | | | | | | |
|-----|--------|------------|---------------------|-------|--------|---------|
| Rev | Status | Rev. Date | Purpose of revision | Drawn | Chck'd | Apprv'd |
| P01 | S9 | 20/09/2023 | Deadline 5 | BB | SK | BF |

| | | | | |
|--|--|--|---|--|
| For location see Figure 7.16 - Visual Effects Drawing with Representative Viewpoint and Photomontage Locations Summer Viewpoint: S-03 Date and Time: 28/05/2019 16:50 | | Visualisation Type: Type 3 Projection Type: Cylindrical Enlargement Factor: 1.5 Horizontal FOV: 56.5° | FL, Max Aperture: 50mm, 1.75 Tripod Height: 1.5m Viewpoint Ground Height: 86.7m AOD Viewpoint Grid Reference: 569530E, 169900N | Distance to Order Limits: 0m View Direction (Centre of View): SSE GPS Accuracy: 5m |
| Camera: Canon EOS 6D MkII Lens: Canon EF 50mm f/1.8 STM Equipment: Manfrotto MA 454 Micro Positioning Plate Manfrotto SBH-100 Ball Head | | | | |

Client



LOWER THAMES CROSSING
 5th Floor Beaufort House
 15 St Botolph Street
 London EC3A 7DT

| | |
|---------------|--|
| Project | LOWER THAMES CROSSING |
| Drawing title | Figure 7.19 Photomontage - Viewpoint S-03 Summer Year 15 Sheet 3 of 4 |

| | | | | |
|----------------|----|---|---|----------|
| Drawn | BB | Date - 20/09/2023 | Status | Revision |
| Checked | SK | Date - 20/09/2023 | S9 | P01 |
| Approved | BF | Date - 20/09/2023 | Application Document No. TR010032/APP/6.2 | |
| Drawing number | | HE540039-CJV-ELS-SZP_ZZ000000_Z-DR-LV-00327 | | |



For location see Figure 7.16 - Visual Effects Drawing with Representative Viewpoint and Photomontage Locations

Summer Viewpoint: S-03
Date and Time: 28/05/2019 16:50

Camera: Canon EOS 6D MkII
Lens: Canon EF 50mm f/1.8 STM
Equipment: Manfrotto MA 454 Micro Positioning Plate
Manfrotto SBH-100 Ball Head

Visualisation Type: Type 3
Projection Type: Cylindrical
Enlargement Factor: 1.5
Horizontal FOV: 56.5°

FL, Max Aperture: 50mm, 1.75
Tripod Height: 1.5m
Viewpoint Ground Height: 86.7m AOD
Viewpoint Grid Reference: 569530E, 169900N

Distance to Order Limits: 0m
View Direction (Centre of View): SSE
GPS Accuracy: 5m



LOWER THAMES CROSSING
5th Floor Beaufort House
15 St Botolph Street
London EC3A 7DT

Project: LOWER THAMES CROSSING
Drawing title: Figure 7.19
Baseline Photography - Viewpoint S-03
Summer Year 15
Sheet 4 of 4

| | | | | |
|----------------|----|--|---|----------|
| Drawn | BB | Date - 20/09/2023 | Status | Revision |
| Checked | SK | Date - 20/09/2023 | S9 | P01 |
| Approved | BF | Date - 20/09/2023 | Application Document No. TR010032/APP/6.2 | |
| Drawing number | | HE540039-CJV-ELS-SZP_ZZ000000_Z-DR-LV-00328A | | |

| | | | | | | |
|-----|--------|------------|---------------------|-------|--------|---------|
| P01 | S9 | 20/09/2023 | Deadline 5 | BB | SK | BF |
| Rev | Status | Rev. Date | Purpose of revision | Drawn | Chck'd | Apprv'd |



| P01 | S9 | 20/09/2023 | Deadline 5 | BB | SK | BF |
|-----|--------|------------|---------------------|-------|--------|---------|
| Rev | Status | Rev. Date | Purpose of revision | Drawn | Chck'd | Apprv'd |

| | | | | | | | |
|--|--|--------------------------|------------------|---------------------------|------------------|---------------------------|-----------------------|
| For location see Figure 7.16 - Visual Effects Drawing with Representative Viewpoint and Photomontage Locations | | Summer Viewpoint: | S-03 | | | | |
| | | Date and Time: | 28/05/2019 16:50 | | | | |
| Camera: | Canon EOS 6D MkII | Visualisation Type: | Type 3 | FL, Max Aperture: | 50mm, 1.75 | Distance to Order Limits: | 0m |
| Lens: | Canon EF 50mm f/1.8 STM | Projection Type: | Cylindrical | Tripod Height: | 1.5m | View Direction | (Centre of View): SSE |
| Equipment: | Manfrotto MA 454 Micro Positioning Plate | Enlargement Factor: | 1.5 | Viewpoint Ground Height: | 86.7m AOD | GPS Accuracy: | 5m |
| | Manfrotto SBH-100 Ball Head | Horizontal FOV: | 56.5° | Viewpoint Grid Reference: | 569530E, 169900N | | |

Client



LOWER THAMES CROSSING
 5th Floor Beaufort House
 15 St Botolph Street
 London EC3A 7DT

| | |
|---------------|--|
| Project | LOWER THAMES CROSSING |
| Drawing title | Figure 7.19 Photomontage - Viewpoint S-03 Summer Year 15 Sheet 4 of 4 |

| | | | | | | |
|----------------|----|---|---|----|----------|-----|
| Drawn | BB | Date - 20/09/2023 | Status | S9 | Revision | P01 |
| Checked | SK | Date - 20/09/2023 | | | | |
| Approved | BF | Date - 20/09/2023 | Application Document No. TR010032/APP/6.2 | | | |
| Drawing number | | HE540039-CJV-ELS-SZP_ZZ000000_Z-DR-LV-00328 | | | | |



| | | | | | | |
|-----|--------|------------|---------------------|-------|--------|---------|
| Rev | Status | Rev. Date | Purpose of revision | Drawn | Chck'd | Apprv'd |
| P01 | S8 | 05/08/2022 | First Issued | BB | HP | SK |

For location see Figure 7.16 - Visual Effects Drawing with Representative Viewpoint and Photomontage Locations

Camera: Canon EOS 6D MkII
 Lens: Canon EF 50mm f/1.8 STM
 Equipment: Manfrotto MA 454 Micro Positioning Plate
 Manfrotto SBH-100 Ball Head

Winter Viewpoint:
 Date and Time: S-05a
 03/12/2019 13:28

Visualisation Type: Type 3
 Projection Type: Cylindrical
 Enlargement Factor: 1.5
 Horizontal FOV: 56.5°

FL, Max Aperture: 50mm, 1.75
 Tripod Height: 1.94m
 Viewpoint Ground Height: 84.2m AOD
 Viewpoint Grid Reference: 569461E, 169552N

Distance to Order Limits: 0m
 View Direction (Centre of View): W
 GPS Accuracy: 5m

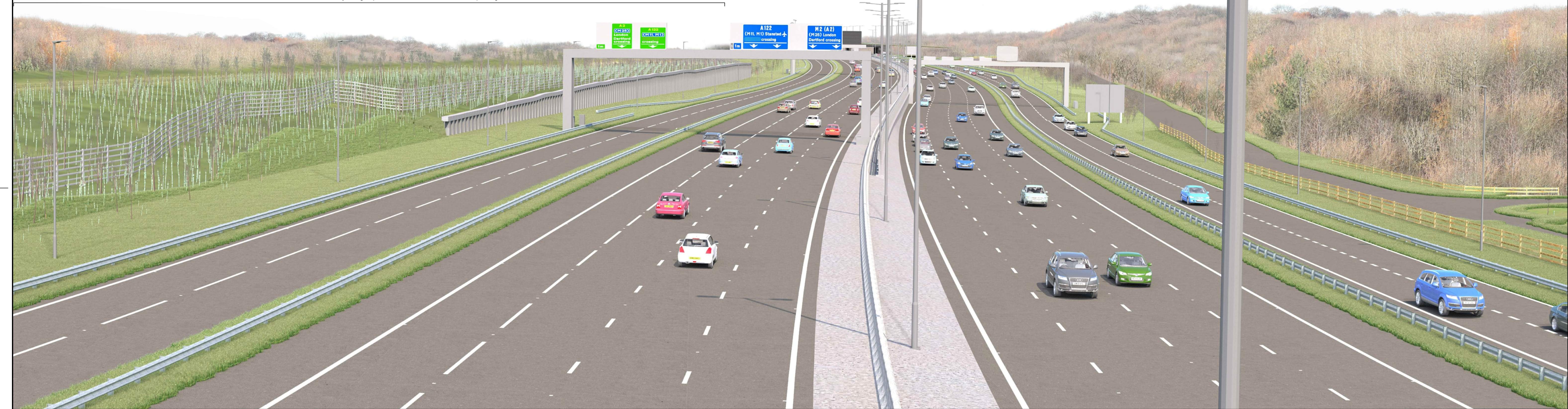


LOWER THAMES CROSSING
 5th Floor Beaufort House
 15 St Botolph Street
 London EC3A 7DT

Project: LOWER THAMES CROSSING
 Drawing title: Figure 7.19
 Baseline Photography - Viewpoint S-05a
 Winter Year 1
 Sheet 1 of 2

| | | | | |
|--|----|-------------------|---|----------|
| Drawn | BB | Date - 05/08/2022 | Status | Revision |
| Checked | HP | Date - 05/08/2022 | S8 | P01 |
| Approved | SK | Date - 05/08/2022 | Application Document No. TR010032/APP/6.2 | |
| Drawing number HE540039-CJV-ELS-SZP_ZZ000000_Z-DR-LV-00287A | | | | |

Indicative extent of increased visibility of High Speed 1 infrastructure and occasional passing trains



| P03 | S9 | 10/11/2023 | Deadline 9 | BB | SK | BF |
|-----|--------|------------|---------------------|-------|--------|---------|
| P02 | S9 | 07/08/2023 | Deadline 3 | BB | HP | SK |
| P01 | S8 | 05/08/2022 | First Issued | BB | HP | SK |
| Rev | Status | Rev. Date | Purpose of revision | Drawn | Chck'd | Apprv'd |

| | | | | | | | | | |
|--|--|--|---------------------------|---|---------------------------------------|--|--|---|---------------|
| For location see Figure 7.16 - Visual Effects Drawing with Representative Viewpoint and Photomontage Locations | | Winter Viewpoint: Date and Time: | S-05a 03/12/2019 13:28 | Visualisation Type: Projection Type: Enlargement Factor: Horizontal FOV: | Type 3 Cylindrical 1.5 56.5° | FL, Max Aperture: Tripod Height: Viewpoint Ground Height: Viewpoint Grid Reference: | 50mm, 1.75 1.94m 84.2m AOD 569461E, 169552N | Distance to Order Limits: View Direction (Centre of View): GPS Accuracy: | 0m W 5m |
|--|--|--|---------------------------|---|---------------------------------------|--|--|---|---------------|

Client

LOWER THAMES CROSSING
5th Floor Beaufort House
15 St Botolph Street
London EC3A 7DT

Project LOWER THAMES CROSSING
Drawing title Figure 7.19
Photomontage - Viewpoint S-05a
Winter Year 1
Sheet 1 of 2

| | | | | |
|----------------|----|---|---|----------|
| Drawn | BB | Date - 10/11/2023 | Status | Revision |
| Checked | SK | Date - 10/11/2023 | S9 | P03 |
| Approved | BF | Date - 10/11/2023 | Application Document No. TR010032/APP/6.2 | |
| Drawing number | | HE540039-CJV-ELS-SZP_ZZ000000_Z-DR-LV-00287 | | |



| | | | | | | |
|-----|--------|------------|---------------------|-------|--------|---------|
| Rev | Status | Rev. Date | Purpose of revision | Drawn | Chck'd | Apprv'd |
| P01 | S8 | 05/08/2022 | First Issued | BB | HP | SK |

| | | | |
|--|--|--|---------------------------|
| For location see Figure 7.16 - Visual Effects Drawing with Representative Viewpoint and Photomontage Locations | | Summer Viewpoint: Date and Time: | S-05a 25/07/2019 10:58 |
| Camera: | Canon EOS 6D MkII | Visualisation Type: | Type 3 |
| Lens: | Canon EF 50mm f/1.8 STM | Projection Type: | Cylindrical |
| Equipment: | Manfrotto MA 454 Micro Positioning Plate | Enlargement Factor: | 1.5 |
| | Manfrotto SBH-100 Ball Head | Horizontal FOV: | 56.5° |
| FL, Max Aperture: | 50mm, 1.75 | Distance to Order Limits: | 0m |
| Tripod Height: | 1.94m | View Direction: | W |
| Viewpoint Ground Height: | 84.2m AOD | (Centre of View): | W |
| Viewpoint Grid Reference: | 569461E, 169552N | GPS Accuracy: | 5m |



LOWER THAMES CROSSING
5th Floor Beaufort House
15 St Botolph Street
London EC3A 7DT

| | |
|---------------|---|
| Client | LOWER THAMES CROSSING |
| Project | LOWER THAMES CROSSING |
| Drawing title | Figure 7.19 Baseline Photography - Viewpoint S-05a Summer Year 15 Sheet 2 of 2 |

| | | | | | | | |
|----------|----|------|--------------|--|----|----------|-----|
| Drawn | BB | Date | - 05/08/2022 | Status | S8 | Revision | P01 |
| Checked | HP | Date | - 05/08/2022 | Application Document No. TR010032/APP/6.2 | | | |
| Approved | SK | Date | - 05/08/2022 | Drawing number HE540039-CJV-ELS-SZP_ZZ000000_Z-DR-LV-00288A | | | |



| | | | | | | |
|-----|--------|------------|---------------------|-------|--------|---------|
| Rev | Status | Rev. Date | Purpose of revision | Drawn | Chck'd | Apprv'd |
| P03 | S9 | 10/11/2023 | Deadline 9 | BB | SK | BF |
| P02 | S9 | 07/08/2023 | Deadline 3 | BB | HP | SK |
| P01 | S8 | 05/08/2022 | First Issued | BB | HP | SK |

| | | | | | |
|--|--|--|--|--|--|
| For location see Figure 7.16 - Visual Effects Drawing with Representative Viewpoint and Photomontage Locations | | Summer Viewpoint: Date and Time: S-05a 25/07/2019 10:58 | Visualisation Type: Type 3 Projection Type: Cylindrical Enlargement Factor: 1.5 Horizontal FOV: 56.5° | FL, Max Aperture: 50mm, 1.75 Tripod Height: 1.94m Viewpoint Ground Height: 84.2m AOD Viewpoint Grid Reference: 569461E, 169552N | Distance to Order Limits: 0m View Direction (Centre of View): W GPS Accuracy: 5m |
|--|--|--|--|--|--|



Client
LOWER THAMES CROSSING
 5th Floor Beaufort House
 15 St Botolph Street
 London EC3A 7DT

Project
 LOWER THAMES CROSSING
 Drawing title: Figure 7.19
 Photomontage - Viewpoint S-05a
 Summer Year 15
 Sheet 2 of 2

| | | | | |
|----------------|----|---|---|----------|
| Drawn | BB | Date - 10/11/2023 | Status | Revision |
| Checked | SK | Date - 10/11/2023 | S9 | P03 |
| Approved | BF | Date - 10/11/2023 | Application Document No. TR010032/APP/6.2 | |
| Drawing number | | HE540039-CJV-ELS-SZP_ZZ000000_Z-DR-LV-00288 | | |



| | | | | | | |
|-----|--------|------------|---------------------|-------|--------|---------|
| Rev | Status | Rev. Date | Purpose of revision | Drawn | Chck'd | Apprv'd |
| P01 | S9 | 13/10/2023 | Deadline 6 | BB | SK | BF |

For location see Figure 7.16 - Visual Effects Drawing with Representative Viewpoint and Photomontage Locations

| | | | |
|--------------------------|--|---|------------------|
| Winter Viewpoint: | S-11 | Date and Time: | 05/03/2019 14:00 |
| Camera: | Canon EOS 6D MkII | Visualisation Type: | Type 3 |
| Lens: | Canon EF 50mm f/1.8 STM | Projection Type: | Cylindrical |
| Equipment: | Manfrotto MA 454 Micro Positioning Plate | Enlargement Factor: | 1.5 |
| | Manfrotto SBH-100 Ball Head | FL, Max Aperture: | 50mm, 1.75 |
| | | Tripod Height: | 1.5m |
| | | Viewpoint Ground Height: | 116.4m AOD |
| | | Viewpoint Grid Reference: | 568247E, 169475N |
| | | Distance to Order Limits: | 64m |
| | | View Direction (Centre of View): | NNW |
| | | GPS Accuracy: | 5m |
| | | Horizontal FOV: | 56.5° |



Client
LOWER THAMES CROSSING
 5th Floor Beaufort House
 15 St Botolph Street
 London EC3A 7DT

Project
 LOWER THAMES CROSSING
Drawing title
 Figure 7.19
 Baseline Photography - Viewpoint S-11
 Winter Year 1
 Sheet 1 of 6

| | | | | | | | |
|-----------------|----|-------------|------------|---|----|-----------------|-----|
| Drawn | BB | Date | 13/10/2023 | Status | S9 | Revision | P01 |
| Checked | SK | Date | 13/10/2023 | Application Document No. TR010032/APP/6.2 | | | |
| Approved | BF | Date | 13/10/2023 | Drawing number | | | |
| | | | | HE540039-CJV-ELS-SZP_ZZ000000_Z-DR-LV-00329A | | | |



| P01 | S9 | 13/10/2023 | Deadline 6 | BB | SK | BF |
|-----|--------|------------|---------------------|-------|--------|---------|
| Rev | Status | Rev. Date | Purpose of revision | Drawn | Chck'd | Apprv'd |

For location see Figure 7.16 - Visual Effects Drawing with Representative Viewpoint and Photomontage Locations

Camera: Canon EOS 6D MkII
 Lens: Canon EF 50mm f/1.8 STM
 Equipment: Manfrotto MA 454 Micro Positioning Plate
 Manfrotto SBH-100 Ball Head

Winter Viewpoint:
 Date and Time: S-11
 05/03/2019 14:00

Visualisation Type: Type 3
 Projection Type: Cylindrical
 Enlargement Factor: 1.5
 Horizontal FOV: 56.5°

FL, Max Aperture: 50mm, 1.75
 Tripod Height: 1.5m
 Viewpoint Ground Height: 116.4m AOD
 Viewpoint Grid Reference: 568247E, 169475N

Distance to Order Limits: 64m
 View Direction (Centre of View): NNW
 GPS Accuracy: 5m



Client
LOWER THAMES CROSSING
 5th Floor Beaufort House
 15 St Botolph Street
 London EC3A 7DT

Project
 LOWER THAMES CROSSING

Drawing title
 Figure 7.19
 Photomontage - Viewpoint S-11
 Winter Year 1
 Sheet 1 of 6

| | | | | |
|----------------|----|---|---|----------|
| Drawn | BB | Date - 13/10/2023 | Status | Revision |
| Checked | SK | Date - 13/10/2023 | S9 | P01 |
| Approved | BF | Date - 13/10/2023 | Application Document No. TR010032/APP/6.2 | |
| Drawing number | | HE540039-CJV-ELS-SZP_ZZ000000_Z-DR-LV-00329 | | |



| P01 | S9 | 13/10/2023 | Deadline 6 | BB | SK | BF |
|-----|--------|------------|---------------------|-------|--------|---------|
| Rev | Status | Rev. Date | Purpose of revision | Drawn | Chck'd | Apprv'd |

For location see Figure 7.16 - Visual Effects Drawing with Representative Viewpoint and Photomontage Locations

| | | | |
|----------------------------------|--|---|------------------|
| Winter Viewpoint: | S-11 | Date and Time: | 05/03/2019 14:00 |
| Camera: | Canon EOS 6D MkII | Visualisation Type: | Type 3 |
| Lens: | Canon EF 50mm f/1.8 STM | Projection Type: | Cylindrical |
| Equipment: | Manfrotto MA 454 Micro Positioning Plate | Enlargement Factor: | 1.5 |
| | Manfrotto SBH-100 Ball Head | Horizontal FOV: | 56.5° |
| FL, Max Aperture: | 50mm, 1.75 | Distance to Order Limits: | 64m |
| Tripod Height: | 1.5m | View Direction (Centre of View): | NNW |
| Viewpoint Ground Height: | 116.4m AOD | GPS Accuracy: | 5m |
| Viewpoint Grid Reference: | 568247E, 169475N | | |



LOWER THAMES CROSSING
 5th Floor Beaufort House
 15 St Botolph Street
 London EC3A 7DT

| | |
|----------------------|---|
| Project | LOWER THAMES CROSSING |
| Drawing title | Figure 7.19 Baseline Photography - Viewpoint S-11 Winter Year 1 Sheet 2 of 6 |

| | | | | | | |
|---|----|--------------------------|--|----|-----------------|-----|
| Drawn | BB | Date - 13/10/2023 | Status | S9 | Revision | P01 |
| Checked | SK | Date - 13/10/2023 | Application Document No. TR010032/APP/6.2 | | | |
| Approved | BF | Date - 13/10/2023 | Drawing number | | | |
| HE540039-CJV-ELS-SZP_ZZ000000_Z-DR-LV-00330A | | | | | | |



| P01 | S9 | 13/10/2023 | Deadline 6 | BB | SK | BF |
|-----|--------|------------|---------------------|-------|--------|---------|
| Rev | Status | Rev. Date | Purpose of revision | Drawn | Chck'd | Apprv'd |

| | | | | | | | |
|--|--|----------------------------|------------------|----------------------------------|------------------|----------------------------------|-----|
| For location see Figure 7.16 - Visual Effects Drawing with Representative Viewpoint and Photomontage Locations | | Winter Viewpoint: | S-11 | | | | |
| | | Date and Time: | 05/03/2019 14:00 | | | | |
| Camera: | Canon EOS 6D MkII | Visualisation Type: | Type 3 | FL, Max Aperture: | 50mm, 1.75 | Distance to Order Limits: | 64m |
| Lens: | Canon EF 50mm f/1.8 STM | Projection Type: | Cylindrical | Tripod Height: | 1.5m | View Direction | NNW |
| Equipment: | Manfrotto MA 454 Micro Positioning Plate | Enlargement Factor: | 1.5 | Viewpoint Ground Height: | 116.4m AOD | (Centre of View): | NNW |
| | Manfrotto SBH-100 Ball Head | Horizontal FOV: | 56.5° | Viewpoint Grid Reference: | 568247E, 169475N | GPS Accuracy: | 5m |



LOWER THAMES CROSSING
 5th Floor Beaufort House
 15 St Botolph Street
 London EC3A 7DT

| | |
|----------------------|---|
| Project | LOWER THAMES CROSSING |
| Drawing title | Figure 7.19 Photomontage - Viewpoint S-11 Winter Year 1 Sheet 2 of 6 |

| | | | | | | |
|---|----|--------------------------|---|----|-----------------|-----|
| Drawn | BB | Date - 13/10/2023 | Status | S9 | Revision | P01 |
| Checked | SK | Date - 13/10/2023 | | | | |
| Approved | BF | Date - 13/10/2023 | | | | |
| Drawing number | | | HE540039-CJV-ELS-SZP_ZZ000000_Z-DR-LV-00330 | | | |
| Application Document No. TR010032/APP/6.2 | | | | | | |



| P01 | S9 | 13/10/2023 | Deadline 6 | BB | SK | BF |
|-----|--------|------------|---------------------|-------|--------|---------|
| Rev | Status | Rev. Date | Purpose of revision | Drawn | Chck'd | Apprv'd |

For location see Figure 7.16 - Visual Effects Drawing with Representative Viewpoint and Photomontage Locations

Camera: Canon EOS 6D MkII
 Lens: Canon EF 50mm f/1.8 STM
 Equipment: Manfrotto MA 454 Micro Positioning Plate
 Manfrotto SBH-100 Ball Head

Winter Viewpoint:
 Date and Time: S-11
 05/03/2019 14:00

Visualisation Type: Type 3
 Projection Type: Cylindrical
 Enlargement Factor: 1.5
 Horizontal FOV: 56.5°

FL, Max Aperture: 50mm, 1.75
 Tripod Height: 1.5m
 Viewpoint Ground Height: 116.4m AOD
 Viewpoint Grid Reference: 568247E, 169475N

Distance to Order Limits: 64m
 View Direction (Centre of View): NNW
 GPS Accuracy: 5m



LOWER THAMES CROSSING
 5th Floor Beaufort House
 15 St Botolph Street
 London EC3A 7DT

Project: LOWER THAMES CROSSING
 Drawing title: Figure 7.19
 Baseline Photography - Viewpoint S-11
 Winter Year 1
 Sheet 3 of 6

| | | | | |
|----------------|----|--|---|----------|
| Drawn | BB | Date - 13/10/2023 | Status | Revision |
| Checked | SK | Date - 13/10/2023 | S9 | P01 |
| Approved | BF | Date - 13/10/2023 | Application Document No. TR010032/APP/6.2 | |
| Drawing number | | HE540039-CJV-ELS-SZP_ZZ000000_Z-DR-LV-00331A | | |



| P01 | S9 | 13/10/2023 | Deadline 6 | BB | SK | BF |
|-----|--------|------------|---------------------|-------|--------|---------|
| Rev | Status | Rev. Date | Purpose of revision | Drawn | Chck'd | Apprv'd |

| | | | | | | | |
|--|--|--|--------------------------|--|--|--|---|
| For location see Figure 7.16 - Visual Effects Drawing with Representative Viewpoint and Photomontage Locations | | Winter Viewpoint: Date and Time: | S-11 05/03/2019 14:00 | Camera: Canon EOS 6D MkII Lens: Canon EF 50mm f/1.8 STM Equipment: Manfrotto MA 454 Micro Positioning Plate Manfrotto SBH-100 Ball Head | Visualisation Type: Type 3 Projection Type: Cylindrical Enlargement Factor: 1.5 Horizontal FOV: 56.5° | FL, Max Aperture: 50mm, 1.75 Tripod Height: 1.5m Viewpoint Ground Height: 116.4m AOD Viewpoint Grid Reference: 568247E, 169475N | Distance to Order Limits: 64m View Direction (Centre of View): NNW GPS Accuracy: 5m |
|--|--|--|--------------------------|--|--|--|---|



Client
LOWER THAMES CROSSING
5th Floor Beaufort House
15 St Botolph Street
London EC3A 7DT

| | |
|----------------------|---|
| Project | LOWER THAMES CROSSING |
| Drawing title | Figure 7.19 Photomontage - Viewpoint S-11 Winter Year 1 Sheet 3 of 6 |

| | | | | | | | |
|-----------------|----|---------------|------------|--|----|-----------------|-----|
| Drawn | BB | Date - | 13/10/2023 | Status | S9 | Revision | P01 |
| Checked | SK | Date - | 13/10/2023 | Application Document No. TR010032/APP/6.2 | | | |
| Approved | BF | Date - | 13/10/2023 | Drawing number HE540039-CJV-ELS-SZP_ZZ000000_Z-DR-LV-00331 | | | |



| P01 | S9 | 13/10/2023 | Deadline 6 | BB | SK | BF |
|-----|--------|------------|---------------------|-------|--------|---------|
| Rev | Status | Rev. Date | Purpose of revision | Drawn | Chck'd | Apprv'd |

For location see Figure 7.16 - Visual Effects Drawing with Representative Viewpoint and Photomontage Locations

| | | | |
|----------------------------------|--|---|-------------|
| Summer Viewpoint: | S-11 | | |
| Date and Time: | 28/05/2019 11:35 | | |
| Camera: | Canon EOS 6D MkII | Visualisation Type: | Type 3 |
| Lens: | Canon EF 50mm f/1.8 STM | Projection Type: | Cylindrical |
| Equipment: | Manfrotto MA 454 Micro Positioning Plate | Enlargement Factor: | 1.5 |
| | Manfrotto SBH-100 Ball Head | Horizontal FOV: | 56.5° |
| FL, Max Aperture: | 50mm, 1.75 | Distance to Order Limits: | 64m |
| Tripod Height: | 1.5m | View Direction (Centre of View): | NNW |
| Viewpoint Ground Height: | 116.4m AOD | GPS Accuracy: | 5m |
| Viewpoint Grid Reference: | 568247E, 169475N | | |



LOWER THAMES CROSSING
 5th Floor Beaufort House
 15 St Botolph Street
 London EC3A 7DT

Project LOWER THAMES CROSSING
Drawing title Figure 7.19
 Baseline Photography - Viewpoint S-11
 Summer Year 15
 Sheet 4 of 6

| | | | | | | | |
|---|----|---------------|------------|--|----|-----------------|-----|
| Drawn | BB | Date - | 13/10/2023 | Status | S9 | Revision | P01 |
| Checked | SK | Date - | 13/10/2023 | | | | |
| Approved | BF | Date - | 13/10/2023 | | | | |
| Drawing number | | | | HE540039-CJV-ELS-SZP_ZZ000000_Z-DR-LV-00332A | | | |
| Application Document No. TR010032/APP/6.2 | | | | | | | |



| P01 | S9 | 13/10/2023 | Deadline 6 | BB | SK | BF |
|-----|--------|------------|---------------------|-------|--------|---------|
| Rev | Status | Rev. Date | Purpose of revision | Drawn | Chck'd | Apprv'd |

For location see Figure 7.16 - Visual Effects Drawing with Representative Viewpoint and Photomontage Locations

Camera: Canon EOS 6D MkII
 Lens: Canon EF 50mm f/1.8 STM
 Equipment: Manfrotto MA 454 Micro Positioning Plate
 Manfrotto SBH-100 Ball Head

Summer Viewpoint: S-11
 Date and Time: 28/05/2019 11:35

Visualisation Type: Type 3
 Projection Type: Cylindrical
 Enlargement Factor: 1.5
 Horizontal FOV: 56.5°

FL, Max Aperture: 50mm, 1.75
 Tripod Height: 1.5m
 Viewpoint Ground Height: 116.4m AOD
 Viewpoint Grid Reference: 568247E, 169475N

Distance to Order Limits: 64m
 View Direction (Centre of View): NNW
 GPS Accuracy: 5m



LOWER THAMES CROSSING
 5th Floor Beaufort House
 15 St Botolph Street
 London EC3A 7DT

Project: LOWER THAMES CROSSING
 Drawing title: Figure 7.19
 Photomontage - Viewpoint S-11
 Summer Year 15
 Sheet 4 of 6

| | | | | | | |
|---|----|-------------------|---|----|----------|-----|
| Drawn | BB | Date - 13/10/2023 | Status | S9 | Revision | P01 |
| Checked | SK | Date - 13/10/2023 | Application Document No. TR010032/APP/6.2 | | | |
| Approved | BF | Date - 13/10/2023 | Drawing number | | | |
| HE540039-CJV-ELS-SZP_ZZ000000_Z-DR-LV-00332 | | | | | | |



| | | | | | | |
|-----|--------|------------|---------------------|-------|--------|---------|
| Rev | Status | Rev. Date | Purpose of revision | Drawn | Chck'd | Apprv'd |
| P01 | S9 | 13/10/2023 | Deadline 6 | BB | SK | BF |

| | | | | | |
|--|--|--|-------------|----------------------------------|------------------|
| For location see Figure 7.16 - Visual Effects Drawing with Representative Viewpoint and Photomontage Locations | | Summer Viewpoint: Date and Time: | | S-11 28/05/2019 11:35 | |
| Camera: | Canon EOS 6D MkII | Visualisation Type: | Type 3 | FL, Max Aperture: | 50mm, 1.75 |
| Lens: | Canon EF 50mm f/1.8 STM | Projection Type: | Cylindrical | Tripod Height: | 1.5m |
| Equipment: | Manfrotto MA 454 Micro Positioning Plate | Enlargement Factor: | 1.5 | Viewpoint Ground Height: | 116.4m AOD |
| | Manfrotto SBH-100 Ball Head | Horizontal FOV: | 56.5° | Viewpoint Grid Reference: | 568247E, 169475N |
| | | | | Distance to Order Limits: | 64m |
| | | | | View Direction (Centre of View): | NNW |
| | | | | GPS Accuracy: | 5m |



LOWER THAMES CROSSING
5th Floor Beaufort House
15 St Botolph Street
London EC3A 7DT

Project: LOWER THAMES CROSSING
Drawing title: Figure 7.19
Baseline Photography - Viewpoint S-11
Summer Year 15
Sheet 5 of 6

| | | | | | | |
|----------------|----|--|---|----|----------|-----|
| Drawn | BB | Date - 13/10/2023 | Status | S9 | Revision | P01 |
| Checked | SK | Date - 13/10/2023 | | | | |
| Approved | BF | Date - 13/10/2023 | Application Document No. TR010032/APP/6.2 | | | |
| Drawing number | | HE540039-CJV-ELS-SZP_ZZ000000_Z-DR-LV-00333A | | | | |



| P01 | S9 | 13/10/2023 | Deadline 6 | BB | SK | BF |
|-----|--------|------------|---------------------|-------|--------|---------|
| Rev | Status | Rev. Date | Purpose of revision | Drawn | Chck'd | Apprv'd |

For location see Figure 7.16 - Visual Effects Drawing with Representative Viewpoint and Photomontage Locations

Camera: Canon EOS 6D MkII
 Lens: Canon EF 50mm f/1.8 STM
 Equipment: Manfrotto MA 454 Micro Positioning Plate
 Manfrotto SBH-100 Ball Head

Summer Viewpoint: S-11
 Date and Time: 28/05/2019 11:35

Visualisation Type: Type 3
 Projection Type: Cylindrical
 Enlargement Factor: 1.5
 Horizontal FOV: 56.5°

FL, Max Aperture: 50mm, 1.75
 Tripod Height: 1.5m
 Viewpoint Ground Height: 116.4m AOD
 Viewpoint Grid Reference: 568247E, 169475N

Distance to Order Limits: 64m
 View Direction (Centre of View): NNW
 GPS Accuracy: 5m



Client

LOWER THAMES CROSSING
 5th Floor Beaufort House
 15 St Botolph Street
 London EC3A 7DT

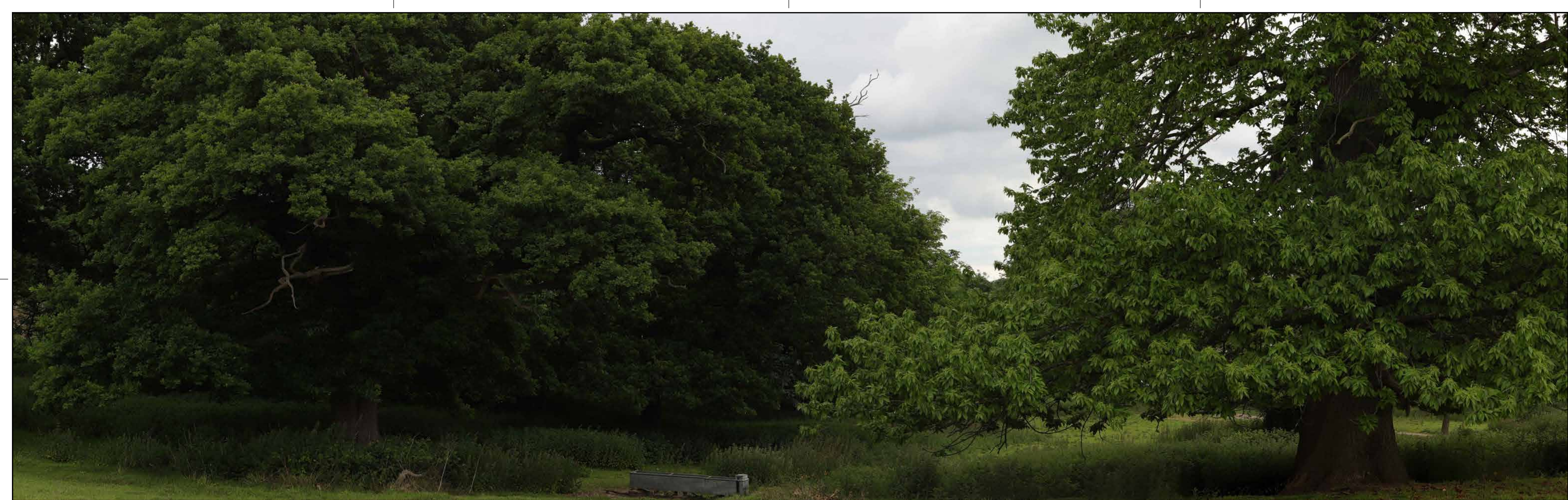
Project

LOWER THAMES CROSSING

Drawing title

Figure 7.19
 Photomontage - Viewpoint S-11
 Summer Year 15
 Sheet 5 of 6

| | | | | |
|----------------|----|---|---|----------|
| Drawn | BB | Date - 13/10/2023 | Status | Revision |
| Checked | SK | Date - 13/10/2023 | S9 | P01 |
| Approved | BF | Date - 13/10/2023 | Application Document No. TR010032/APP/6.2 | |
| Drawing number | | HE540039-CJV-ELS-SZP_ZZ000000_Z-DR-LV-00333 | | |



| P01 | S9 | 13/10/2023 | Deadline 6 | BB | SK | BF |
|-----|--------|------------|---------------------|-------|--------|---------|
| Rev | Status | Rev. Date | Purpose of revision | Drawn | Chck'd | Apprv'd |

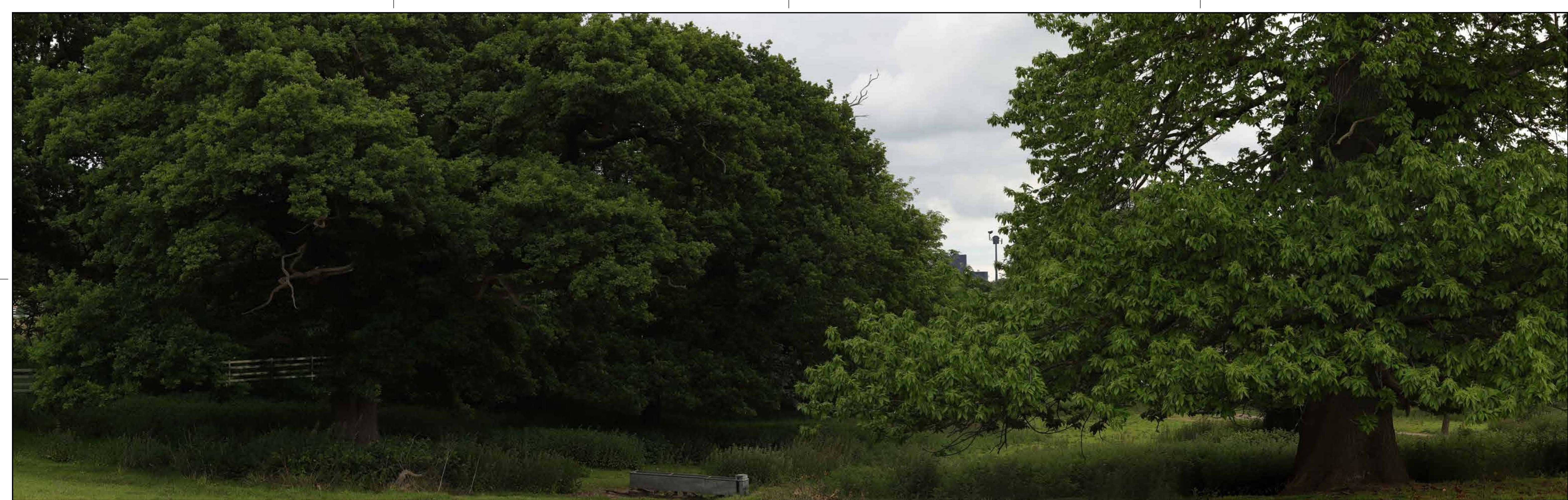
| | | | | | |
|--|--|-------------------------------|-------------|----------------------------------|------------------|
| For location see Figure 7.16 - Visual Effects Drawing with Representative Viewpoint and Photomontage Locations | | Summer Viewpoint: S-11 | | Date and Time: 28/05/2019 11:35 | |
| Camera: | Canon EOS 6D MkII | Visualisation Type: | Type 3 | FL, Max Aperture: | 50mm, 1.75 |
| Lens: | Canon EF 50mm f/1.8 STM | Projection Type: | Cylindrical | Tripod Height: | 1.5m |
| Equipment: | Manfrotto MA 454 Micro Positioning Plate | Enlargement Factor: | 1.5 | Viewpoint Ground Height: | 116.4m AOD |
| | Manfrotto SBH-100 Ball Head | Horizontal FOV: | 56.5° | Viewpoint Grid Reference: | 568247E, 169475N |
| | | | | Distance to Order Limits: | 64m |
| | | | | View Direction (Centre of View): | NNW |
| | | | | GPS Accuracy: | 5m |



LOWER THAMES CROSSING
 5th Floor Beaufort House
 15 St Botolph Street
 London EC3A 7DT

| | |
|---------------|--|
| Project | LOWER THAMES CROSSING |
| Drawing title | Figure 7.19 Baseline Photography - Viewpoint S-11 Summer Year 15 Sheet 6 of 6 |

| | | | | | | |
|--|----|-------------------|---|----|----------|-----|
| Drawn | BB | Date - 13/10/2023 | Status | S9 | Revision | P01 |
| Checked | SK | Date - 13/10/2023 | Application Document No. TR010032/APP/6.2 | | | |
| Approved | BF | Date - 13/10/2023 | Drawing number | | | |
| HE540039-CJV-ELS-SZP_ZZ000000_Z-DR-LV-00334A | | | | | | |



| Rev | Status | Rev. Date | Purpose of revision | Drawn | Chck'd | Apprv'd |
|-----|--------|------------|---------------------|-------|--------|---------|
| P01 | S9 | 13/10/2023 | Deadline 6 | BB | SK | BF |

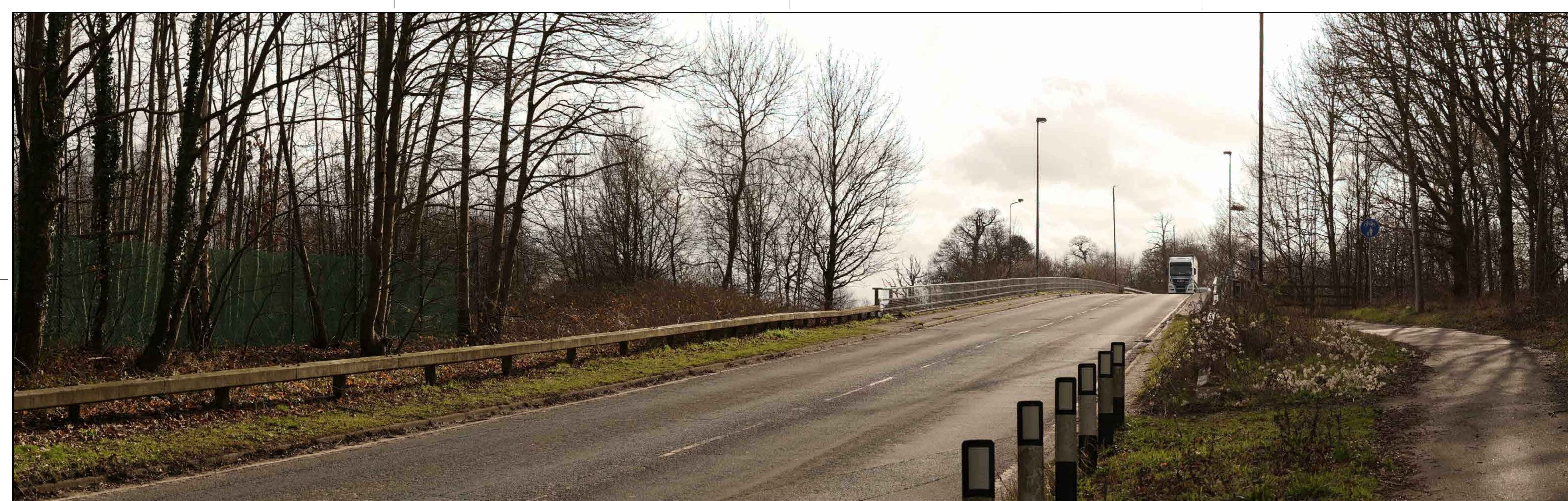
| | | | | | | | |
|--|--|--------------------------|------------------|---------------------------|------------------|---------------------------|-----------------------|
| For location see Figure 7.16 - Visual Effects Drawing with Representative Viewpoint and Photomontage Locations | | Summer Viewpoint: | S-11 | | | | |
| | | Date and Time: | 28/05/2019 11:35 | | | | |
| Camera: | Canon EOS 6D MkII | Visualisation Type: | Type 3 | FL, Max Aperture: | 50mm, 1.75 | Distance to Order Limits: | 64m |
| Lens: | Canon EF 50mm f/1.8 STM | Projection Type: | Cylindrical | Tripod Height: | 1.5m | View Direction | (Centre of View): NNW |
| Equipment: | Manfrotto MA 454 Micro Positioning Plate | Enlargement Factor: | 1.5 | Viewpoint Ground Height: | 116.4m AOD | GPS Accuracy: | 5m |
| | Manfrotto SBH-100 Ball Head | Horizontal FOV: | 56.5° | Viewpoint Grid Reference: | 568247E, 169475N | | |



LOWER THAMES CROSSING
 5th Floor Beaufort House
 15 St Botolph Street
 London EC3A 7DT

| | |
|---------------|--|
| Project | LOWER THAMES CROSSING |
| Drawing title | Figure 7.19 Photomontage - Viewpoint S-11 Summer Year 15 Sheet 6 of 6 |

| | | | | | | |
|---|----|-------------------|---|----|----------|-----|
| Drawn | BB | Date - 13/10/2023 | Status | S9 | Revision | P01 |
| Checked | SK | Date - 13/10/2023 | Application Document No. TR010032/APP/6.2 | | | |
| Approved | BF | Date - 13/10/2023 | Drawing number | | | |
| HE540039-CJV-ELS-SZP_ZZ000000_Z-DR-LV-00334 | | | | | | |



| P01 | S8 | 05/08/2022 | First Issued | BB | HP | SK |
|-----|--------|------------|---------------------|-------|--------|---------|
| Rev | Status | Rev. Date | Purpose of revision | Drawn | Chck'd | Apprv'd |

For location see Figure 7.16 - Visual Effects Drawing with Representative Viewpoint and Photomontage Locations

Camera: Canon EOS 6D MkII
 Lens: Canon EF 50mm f/1.8 STM
 Equipment: Manfrotto MA 454 Micro Positioning Plate
 Manfrotto SBH-100 Ball Head

Winter Viewpoint:
 Date and Time: S-12
 05/03/2019 15:05

Visualisation Type: Type 3
 Projection Type: Cylindrical
 Enlargement Factor: 1.5
 Horizontal FOV: 56.5°

FL, Max Aperture: 50mm, 1.75
 Tripod Height: 1.5m
 Viewpoint Ground Height: 109.6m AOD
 Viewpoint Grid Reference: 568324E, 169733N

Distance to Order Limits: 0m
 View Direction (Centre of View): SSW
 GPS Accuracy: 5m



LOWER THAMES CROSSING
 5th Floor Beaufort House
 15 St Botolph Street
 London EC3A 7DT

Project: LOWER THAMES CROSSING
 Drawing title: Figure 7.19
 Baseline Photography - Viewpoint S-12
 Winter Year 1
 Sheet 1 of 2

| | | | | |
|----------------|----|--|---|----------|
| Drawn | BB | Date - 05/08/2022 | Status | Revision |
| Checked | HP | Date - 05/08/2022 | S8 | P01 |
| Approved | SK | Date - 05/08/2022 | Application Document No. TR010032/APP/6.2 | |
| Drawing number | | HE540039-CJV-ELS-SZP_ZZ000000_Z-DR-LV-00289A | | |



| P02 | S9 | 10/11/2023 | Deadline 9 | BB | SK | BF |
|-----|--------|------------|---------------------|-------|--------|---------|
| P01 | S8 | 05/08/2022 | First Issued | BB | HP | SK |
| Rev | Status | Rev. Date | Purpose of revision | Drawn | Chck'd | Apprv'd |

For location see Figure 7.16 - Visual Effects Drawing with Representative Viewpoint and Photomontage Locations

| | | | | |
|--|--------------------------|--|--|--|
| Winter Viewpoint: Date and Time: | S-12 05/03/2019 15:05 | Visualisation Type: Type 3 Cylindrical Enlargement Factor: Horizontal FOV: | FL, Max Aperture: 50mm, 1.75 Tripod Height: 1.5m Viewpoint Ground Height: 109.6m AOD Viewpoint Grid Reference: 568324E, 169733N | Distance to Order Limits: 0m View Direction (Centre of View): SSW GPS Accuracy: 5m |
|--|--------------------------|--|--|--|



LOWER THAMES CROSSING
5th Floor Beaufort House
15 St Botolph Street
London EC3A 7DT

Project: LOWER THAMES CROSSING
Drawing title: Figure 7.19
Photomontage - Viewpoint S-12
Winter Year 1
Sheet 1 of 2

| | | | | | | |
|---|----|-------------------|---|----|----------|-----|
| Drawn | BB | Date - 10/11/2023 | Status | S9 | Revision | P02 |
| Checked | SK | Date - 10/11/2023 | Application Document No. TR010032/APP/6.2 | | | |
| Approved | BF | Date - 10/11/2023 | Drawing number | | | |
| HE540039-CJV-ELS-SZP_ZZ000000_Z-DR-LV-00289 | | | | | | |



For location see Figure 7.16 - Visual Effects Drawing with Representative Viewpoint and Photomontage Locations

Summer Viewpoint: S-12
Date and Time: 30/05/2019 10:07

Camera: Canon EOS 6D MkII
Lens: Canon EF 50mm f/1.8 STM
Equipment: Manfrotto MA 454 Micro Positioning Plate
Manfrotto SBH-100 Ball Head

Visualisation Type: Type 3
Projection Type: Cylindrical
Enlargement Factor: 1.5
Horizontal FOV: 56.5°

FL, Max Aperture: 50mm, 1.75
Tripod Height: 1.5m
Viewpoint Ground Height: 109.6m AOD
Viewpoint Grid Reference: 568324E, 169733N

Distance to Order Limits: 0m
View Direction (Centre of View): SSW
GPS Accuracy: 5m



LOWER THAMES CROSSING
5th Floor Beaufort House
15 St Botolph Street
London EC3A 7DT

Project: LOWER THAMES CROSSING
Drawing title: Figure 7.19
Baseline Photography - Viewpoint S-12
Summer Year 15
Sheet 2 of 2

| | | | | |
|----------------|----|--|---|----------|
| Drawn | BB | Date - 05/08/2022 | Status | Revision |
| Checked | HP | Date - 05/08/2022 | S8 | P01 |
| Approved | SK | Date - 05/08/2022 | Application Document No. TR010032/APP/6.2 | |
| Drawing number | | HE540039-CJV-ELS-SZP_ZZ000000_Z-DR-LV-00290A | | |



| P02 | S9 | 10/11/2023 | Deadline 9 | BB | SK | BF |
|-----|--------|------------|---------------------|-------|--------|---------|
| P01 | S8 | 05/08/2022 | First Issued | BB | HP | SK |
| Rev | Status | Rev. Date | Purpose of revision | Drawn | Chck'd | Apprv'd |

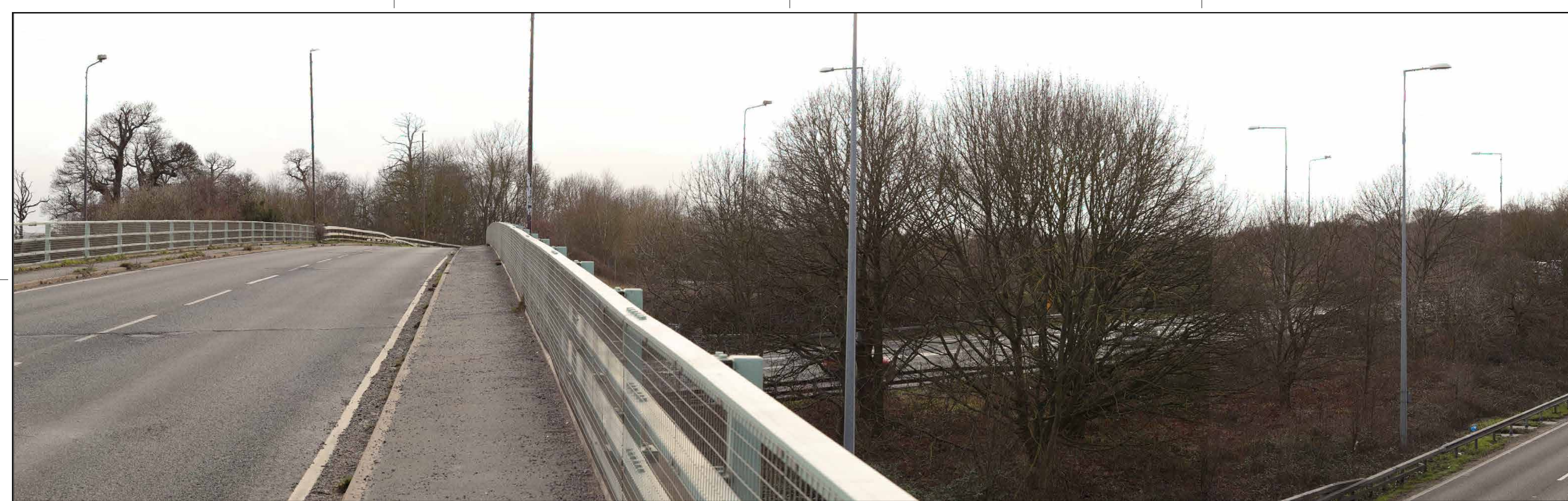
| | | | | | | | |
|--|--|--------------------------|------------------|---------------------------|------------------|---------------------------|-----------------------|
| For location see Figure 7.16 - Visual Effects Drawing with Representative Viewpoint and Photomontage Locations | | Summer Viewpoint: | S-12 | | | | |
| | | Date and Time: | 30/05/2019 10:07 | | | | |
| Camera: | Canon EOS 6D MkII | Visualisation Type: | Type 3 | FL, Max Aperture: | 50mm, 1.75 | Distance to Order Limits: | 0m |
| Lens: | Canon EF 50mm f/1.8 STM | Projection Type: | Cylindrical | Tripod Height: | 1.5m | View Direction | (Centre of View): SSW |
| Equipment: | Manfrotto MA 454 Micro Positioning Plate | Enlargement Factor: | 1.5 | Viewpoint Ground Height: | 109.6m AOD | Viewpoint Grid Reference: | 568324E, 169733N |
| | Manfrotto SBH-100 Ball Head | Horizontal FOV: | 56.5° | Viewpoint Grid Reference: | 568324E, 169733N | GPS Accuracy: | 5m |



Client
national highways
 LOWER THAMES CROSSING
 5th Floor Beaufort House
 15 St Botolph Street
 London EC3A 7DT

Project
 LOWER THAMES CROSSING
 Drawing title
 Figure 7.19
 Photomontage - Viewpoint S-12
 Summer Year 15
 Sheet 2 of 2

| | | | | |
|----------------|----|---|---|----------|
| Drawn | BB | Date - 10/11/2023 | Status | Revision |
| Checked | SK | Date - 10/11/2023 | S9 | P02 |
| Approved | BF | Date - 10/11/2023 | Application Document No. TR010032/APP/6.2 | |
| Drawing number | | HE540039-CJV-ELS-SZP_ZZ000000_Z-DR-LV-00290 | | |



For location see Figure 7.16 - Visual Effects Drawing with Representative Viewpoint and Photomontage Locations

Winter Viewpoint:
Date and Time: S-13
05/03/2019 15:48

Camera: Canon EOS 6D MkII
Lens: Canon EF 50mm f/1.8 STM
Equipment: Manfrotto MA 454 Micro Positioning Plate
Manfrotto SBH-100 Ball Head

Visualisation Type: Type 3
Projection Type: Cylindrical
Enlargement Factor: 1.5
Horizontal FOV: 56.5°

FL, Max Aperture: 50mm, 1.75
Tripod Height: 1.65m
Viewpoint Ground Height: 115.4m AOD
Viewpoint Grid Reference: 568282E, 169684N
Distance to Order Limits: 0m
View Direction (Centre of View): SSW
GPS Accuracy: 5m



LOWER THAMES CROSSING
5th Floor Beaufort House
15 St Botolph Street
London EC3A 7DT

Project: LOWER THAMES CROSSING
Drawing title: Figure 7.19
Baseline Photography - Viewpoint S-13
Winter Year 1
Sheet 1 of 4

| | | | | |
|--|----|-------------------|---|----------|
| Drawn | BB | Date - 05/08/2022 | Status | Revision |
| Checked | HP | Date - 05/08/2022 | S8 | P01 |
| Approved | SK | Date - 05/08/2022 | Application Document No. TR010032/APP/6.2 | |
| Drawing number HE540039-CJV-ELS-SZP_ZZ000000_Z-DR-LV-00291A | | | | |

| | | | | | | |
|-----|--------|------------|---------------------|-------|--------|---------|
| P01 | S8 | 05/08/2022 | First Issued | BB | HP | SK |
| Rev | Status | Rev. Date | Purpose of revision | Drawn | Chck'd | Apprv'd |



| P02 | S9 | 10/11/2023 | Deadline 9 | BB | SK | BF |
|-----|--------|------------|---------------------|-------|--------|---------|
| P01 | S8 | 05/08/2022 | First Issued | BB | HP | SK |
| Rev | Status | Rev. Date | Purpose of revision | Drawn | Chck'd | Apprv'd |

For location see Figure 7.16 - Visual Effects Drawing with Representative Viewpoint and Photomontage Locations

Winter Viewpoint:
Date and Time: S-13
05/03/2019 15:48

Visualisation Type: Type 3
Projection Type: Cylindrical
Enlargement Factor: 1.5
Horizontal FOV: 56.5°

FL, Max Aperture: 50mm, 1.75
Tripod Height: 1.65m
Viewpoint Ground Height: 115.4m AOD
Viewpoint Grid Reference: 568282E, 169684N

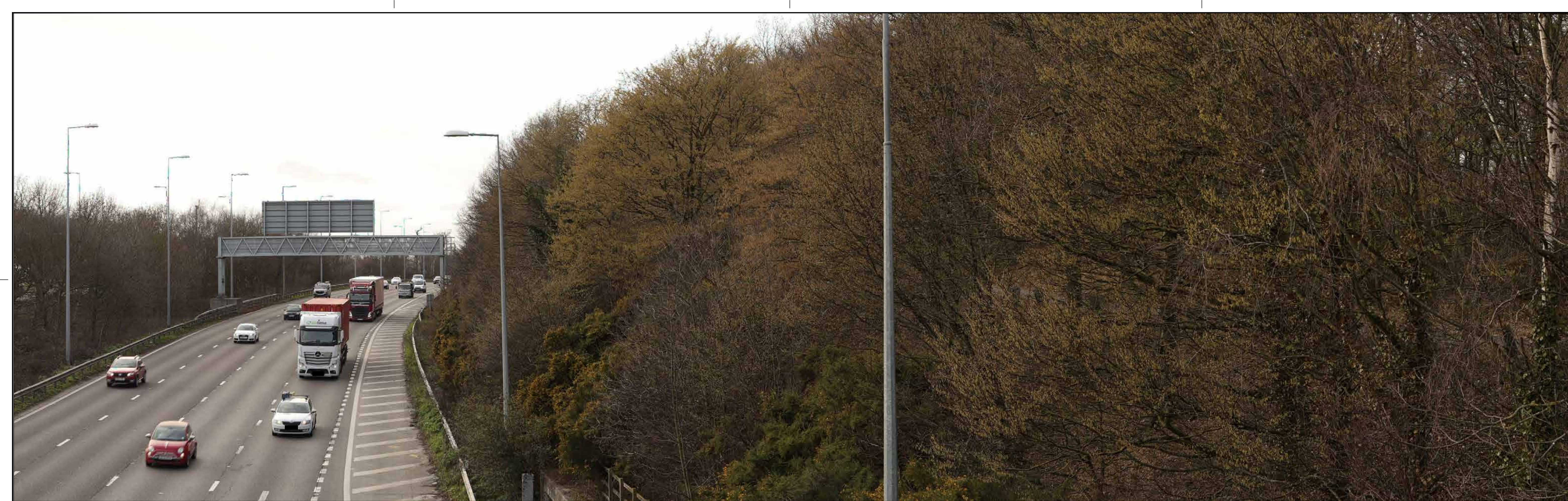
Distance to Order Limits: 0m
View Direction (Centre of View): SSW
GPS Accuracy: 5m



LOWER THAMES CROSSING
5th Floor Beaufort House
15 St Botolph Street
London EC3A 7DT

Project: LOWER THAMES CROSSING
Drawing title: Figure 7.19
Photomontage - Viewpoint S-13
Winter Year 1
Sheet 1 of 4

| | | | | |
|----------------|----|---|---|----------|
| Drawn | BB | Date - 10/11/2023 | Status | Revision |
| Checked | SK | Date - 10/11/2023 | S9 | P02 |
| Approved | BF | Date - 10/11/2023 | Application Document No. TR010032/APP/6.2 | |
| Drawing number | | HE540039-CJV-ELS-SZP_ZZ000000_Z-DR-LV-00291 | | |



| | | | | | | |
|-----|--------|------------|---------------------|-------|--------|---------|
| Rev | Status | Rev. Date | Purpose of revision | Drawn | Chck'd | Apprv'd |
| P01 | S8 | 05/08/2022 | First Issued | BB | HP | SK |

For location see Figure 7.16 - Visual Effects Drawing with Representative Viewpoint and Photomontage Locations

Camera: Canon EOS 6D MkII
 Lens: Canon EF 50mm f/1.8 STM
 Equipment: Manfrotto MA 454 Micro Positioning Plate
 Manfrotto SBH-100 Ball Head

Winter Viewpoint:
 Date and Time: S-13
 05/03/2019 15:48

Visualisation Type: Type 3
 Projection Type: Cylindrical
 Enlargement Factor: 1.5
 Horizontal FOV: 56.5°

FL, Max Aperture: 50mm, 1.75
 Tripod Height: 1.65m
 Viewpoint Ground Height: 115.4m AOD
 Viewpoint Grid Reference: 568282E, 169684N

Distance to Order Limits: 0m
 View Direction (Centre of View): SSW
 GPS Accuracy: 5m



LOWER THAMES CROSSING
 5th Floor Beaufort House
 15 St Botolph Street
 London EC3A 7DT

Project: LOWER THAMES CROSSING
 Drawing title: Figure 7.19
 Baseline Photography - Viewpoint S-13
 Winter Year 1
 Sheet 2 of 4

| | | | | |
|----------------|----|--|---|----------|
| Drawn | BB | Date - 05/08/2022 | Status | Revision |
| Checked | HP | Date - 05/08/2022 | S8 | P01 |
| Approved | SK | Date - 05/08/2022 | Application Document No. TR010032/APP/6.2 | |
| Drawing number | | HE540039-CJV-ELS-SZP_ZZ000000_Z-DR-LV-00292A | | |



For location see Figure 7.16 - Visual Effects Drawing with Representative Viewpoint and Photomontage Locations

Winter Viewpoint: S-13
Date and Time: 05/03/2019 15:48

Camera: Canon EOS 6D MkII
Lens: Canon EF 50mm f/1.8 STM
Equipment: Manfrotto MA 454 Micro Positioning Plate
Manfrotto SBH-100 Ball Head

Visualisation Type: Type 3
Projection Type: Cylindrical
Enlargement Factor: 1.5
Horizontal FOV: 56.5°

FL, Max Aperture: 50mm, 1.75
Tripod Height: 1.65m
Viewpoint Ground Height: 115.4m AOD
Viewpoint Grid Reference: 568282E, 169684N

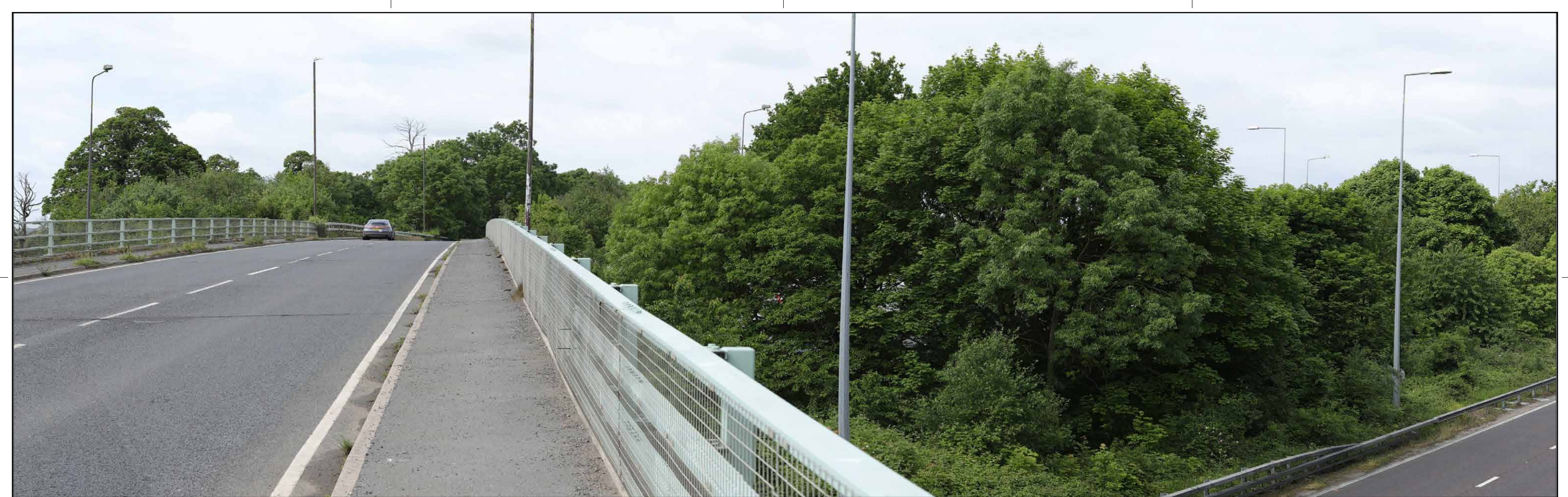
Distance to Order Limits: 0m
View Direction (Centre of View): SSW
GPS Accuracy: 5m



LOWER THAMES CROSSING
5th Floor Beaufort House
15 St Botolph Street
London EC3A 7DT

Project: LOWER THAMES CROSSING
Drawing title: Figure 7.19
Photomontage - Viewpoint S-13
Winter Year 1
Sheet 2 of 4

| | | | | |
|----------------|----|---|---|----------|
| Drawn | BB | Date - 10/11/2023 | Status | Revision |
| Checked | SK | Date - 10/11/2023 | S9 | P02 |
| Approved | BF | Date - 10/11/2023 | Application Document No. TR010032/APP/6.2 | |
| Drawing number | | HE540039-CJV-ELS-SZP_ZZ000000_Z-DR-LV-00292 | | |



| | | | | | | |
|-----|--------|------------|---------------------|-------|--------|---------|
| Rev | Status | Rev. Date | Purpose of revision | Drawn | Chck'd | Apprv'd |
| P01 | S8 | 05/08/2022 | First Issued | BB | HP | SK |

For location see Figure 7.16 - Visual Effects Drawing with Representative Viewpoint and Photomontage Locations

Camera: Canon EOS 6D MkII
 Lens: Canon EF 50mm f/1.8 STM
 Equipment: Manfrotto MA 454 Micro Positioning Plate
 Manfrotto SBH-100 Ball Head

Summer Viewpoint:
 Date and Time: S-13
 30/05/2019 10:21

Visualisation Type: Type 3
 Projection Type: Cylindrical
 Enlargement Factor: 1.5
 Horizontal FOV: 56.5°

FL, Max Aperture: 50mm, 1.75
 Tripod Height: 1.65m
 Viewpoint Ground Height: 115.4m AOD
 Viewpoint Grid Reference: 568282E, 169684N

Distance to Order Limits: 0m
 View Direction (Centre of View): SSW
 GPS Accuracy: 5m



LOWER THAMES CROSSING
 5th Floor Beaufort House
 15 St Botolph Street
 London EC3A 7DT

Project: LOWER THAMES CROSSING
 Drawing title: Figure 7.19
 Baseline Photography - Viewpoint S-13
 Summer Year 15
 Sheet 3 of 4

| | | | | |
|--|----|-------------------|---|----------|
| Drawn | BB | Date - 05/08/2022 | Status | Revision |
| Checked | HP | Date - 05/08/2022 | S8 | P01 |
| Approved | SK | Date - 05/08/2022 | Application Document No. TR010032/APP/6.2 | |
| Drawing number HE540039-CJV-ELS-SZP_ZZ000000_Z-DR-LV-00293A | | | | |



| P02 | S9 | 10/11/2023 | Deadline 9 | BB | SK | BF |
|-----|--------|------------|---------------------|-------|--------|---------|
| P01 | S8 | 05/08/2022 | First Issued | BB | HP | SK |
| Rev | Status | Rev. Date | Purpose of revision | Drawn | Chck'd | Apprv'd |

For location see Figure 7.16 - Visual Effects Drawing with Representative Viewpoint and Photomontage Locations

Camera: Canon EOS 6D MkII
 Lens: Canon EF 50mm f/1.8 STM
 Equipment: Manfrotto MA 454 Micro Positioning Plate
 Manfrotto SBH-100 Ball Head

Summer Viewpoint:
 Date and Time: S-13
 30/05/2019 10:21

Visualisation Type: Type 3
 Projection Type: Cylindrical
 Enlargement Factor: 1.5
 Horizontal FOV: 56.5°

FL, Max Aperture: 50mm, 1.75
 Tripod Height: 1.65m
 Viewpoint Ground Height: 115.4m AOD
 Viewpoint Grid Reference: 568282E, 169684N

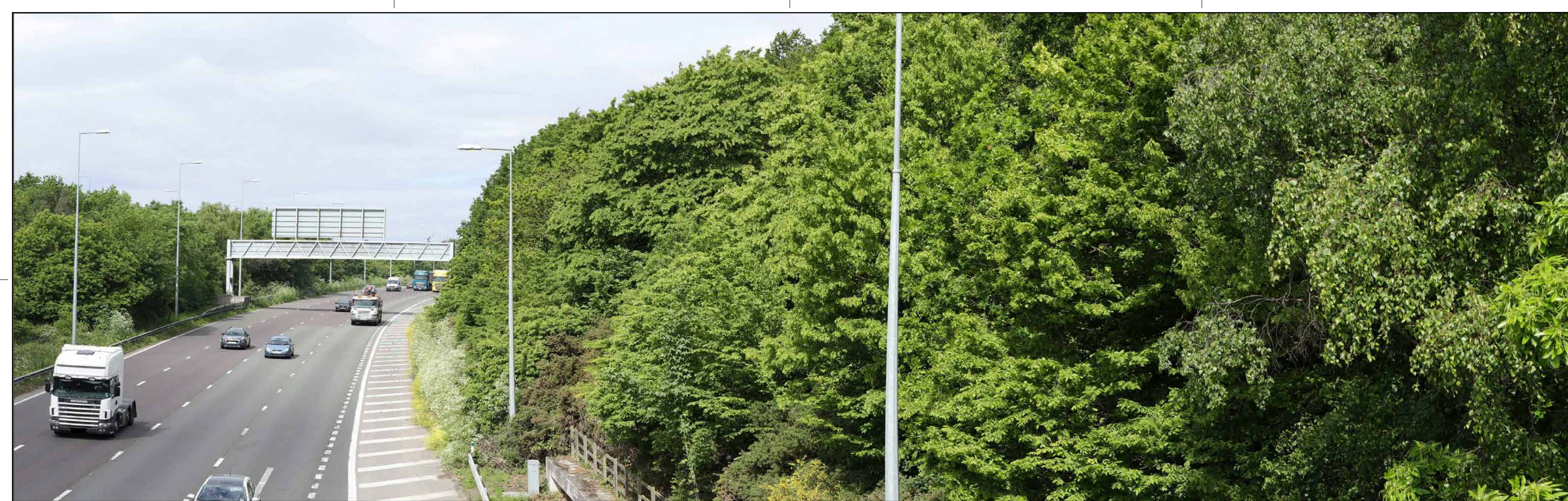
Distance to Order Limits: 0m
 View Direction (Centre of View): SSW
 GPS Accuracy: 5m



Client
LOWER THAMES CROSSING
 5th Floor Beaufort House
 15 St Botolph Street
 London EC3A 7DT

Project
 LOWER THAMES CROSSING
 Drawing title: Figure 7.19
 Photomontage - Viewpoint S-13
 Summer Year 15
 Sheet 3 of 4

| | | | | | | |
|----------|----|-------------------|--------------------------|---|----------|-----|
| Drawn | BB | Date - 10/11/2023 | Status | S9 | Revision | P02 |
| Checked | SK | Date - 10/11/2023 | Application Document No. | TR010032/APP/6.2 | | |
| Approved | BF | Date - 10/11/2023 | Drawing number | HE540039-CJV-ELS-SZP_ZZ000000_Z-DR-LV-00293 | | |



| | | | | | | |
|-----|--------|------------|---------------------|-------|--------|---------|
| Rev | Status | Rev. Date | Purpose of revision | Drawn | Chck'd | Apprv'd |
| P01 | S8 | 05/08/2022 | First Issued | BB | HP | SK |

For location see Figure 7.16 - Visual Effects Drawing with Representative Viewpoint and Photomontage Locations

Camera: Canon EOS 6D MkII
 Lens: Canon EF 50mm f/1.8 STM
 Equipment: Manfrotto MA 454 Micro Positioning Plate
 Manfrotto SBH-100 Ball Head

Summer Viewpoint:
 Date and Time: S-13
 30/05/2019 10:21

Visualisation Type: Type 3
 Projection Type: Cylindrical
 Enlargement Factor: 1.5
 Horizontal FOV: 56.5°

FL, Max Aperture: 50mm, 1.75
 Tripod Height: 1.65m
 Viewpoint Ground Height: 115.4m AOD
 Viewpoint Grid Reference: 568282E, 169684N

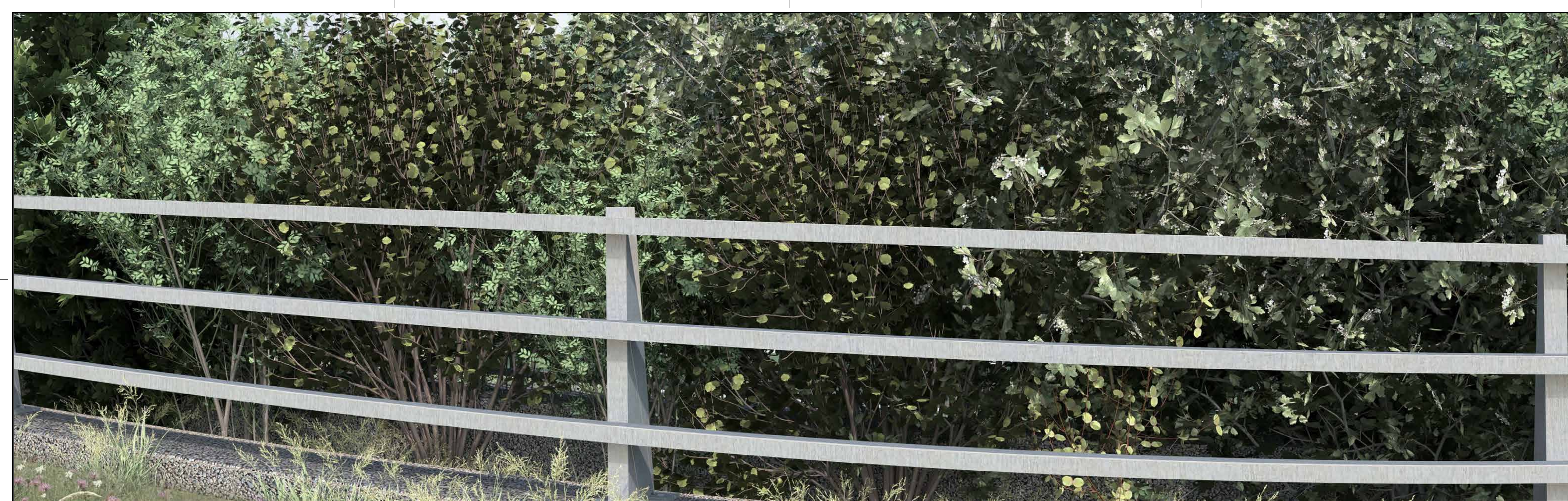
Distance to Order Limits: 0m
 View Direction (Centre of View): SSW
 GPS Accuracy: 5m



Client
LOWER THAMES CROSSING
 5th Floor Beaufort House
 15 St Botolph Street
 London EC3A 7DT

Project LOWER THAMES CROSSING
 Drawing title Figure 7.19
 Baseline Photography - Viewpoint S-13
 Summer Year 15
 Sheet 4 of 4

| | | | | |
|---|----|-------------------|---|----------|
| Drawn | BB | Date - 05/08/2022 | Status | Revision |
| Checked | HP | Date - 05/08/2022 | S8 | P01 |
| Approved | SK | Date - 05/08/2022 | Application Document No. TR010032/APP/6.2 | |
| Drawing number HE540039-CJV-ELS-SZP_ZZ000000_Z-DR-LV-00294A | | | | |



| P01 | S8 | 05/08/2022 | First Issued | BB | HP | SK |
|-----|--------|------------|---------------------|-------|--------|---------|
| Rev | Status | Rev. Date | Purpose of revision | Drawn | Chck'd | Apprv'd |

| | | | | | | | |
|--|--|--------------------------|------------------|---------------------------|------------------|---------------------------|-----------------------|
| For location see Figure 7.16 - Visual Effects Drawing with Representative Viewpoint and Photomontage Locations | | Summer Viewpoint: | S-13 | | | | |
| | | Date and Time: | 30/05/2019 10:21 | | | | |
| Camera: | Canon EOS 6D MkII | Visualisation Type: | Type 3 | FL, Max Aperture: | 50mm, 1.75 | Distance to Order Limits: | 0m |
| Lens: | Canon EF 50mm f/1.8 STM | Projection Type: | Cylindrical | Tripod Height: | 1.65m | View Direction | (Centre of View): SSW |
| Equipment: | Manfrotto MA 454 Micro Positioning Plate | Enlargement Factor: | 1.5 | Viewpoint Ground Height: | 115.4m AOD | GPS Accuracy: | 5m |
| | Manfrotto SBH-100 Ball Head | Horizontal FOV: | 56.5° | Viewpoint Grid Reference: | 568282E, 169684N | | |

Client



LOWER THAMES CROSSING
 5th Floor Beaufort House
 15 St Botolph Street
 London EC3A 7DT

| | |
|---------------|--|
| Project | LOWER THAMES CROSSING |
| Drawing title | Figure 7.19 Photomontage - Viewpoint S-13 Summer Year 15 Sheet 4 of 4 |

| | | | | | | |
|----------------|----|---|---|----|----------|-----|
| Drawn | BB | Date - 05/08/2022 | Status | S8 | Revision | P01 |
| Checked | HP | Date - 05/08/2022 | | | | |
| Approved | SK | Date - 05/08/2022 | Application Document No. TR010032/APP/6.2 | | | |
| Drawing number | | HE540039-CJV-ELS-SZP_ZZ000000_Z-DR-LV-00294 | | | | |



| | | | | | | |
|-----|--------|------------|---------------------|-------|--------|---------|
| P01 | S8 | 05/08/2022 | First Issued | BB | HP | SK |
| Rev | Status | Rev. Date | Purpose of revision | Drawn | Chck'd | Apprv'd |

| | | | | | | | | | |
|--|---|--|--------------------------|----------------------------------|------------------|--------------------------|----------------------|----------------------------------|----|
| For location see Figure 7.16 - Visual Effects Drawing with Representative Viewpoint and Photomontage Locations | | Winter Viewpoint: Date and Time: | S-14 05/03/2019 15:17 | Visualisation Type: | Type 3 | FL, Max Aperture: | 50mm, 1.75 | Distance to Order Limits: | 0m |
| Camera: | Canon EOS 6D MkII | Projection Type: | Cylindrical | Tripod Height: | 1.5m | View Direction | (Centre of View): NE | View Direction | NE |
| Lens: | Canon EF 50mm f/1.8 STM | Enlargement Factor: | 1.5 | Viewpoint Ground Height: | 111.3m AOD | View Direction | (Centre of View): NE | View Direction | NE |
| Equipment: | Manfrotto MA 454 Micro Positioning Plate Manfrotto SBH-100 Ball Head | Horizontal FOV: | 56.5° | Viewpoint Grid Reference: | 568232E, 169606N | GPS Accuracy: | 5m | GPS Accuracy: | 5m |

Client



LOWER THAMES CROSSING
5th Floor Beaufort House
15 St Botolph Street
London EC3A 7DT

Project LOWER THAMES CROSSING
Drawing title Figure 7.19
Baseline Photography - Viewpoint S-14
Winter Year 1
Sheet 1 of 2

| | | | | | | |
|----------|----|-------------------|--------------------------|--|----------|-----|
| Drawn | BB | Date - 05/08/2022 | Status | S8 | Revision | P01 |
| Checked | HP | Date - 05/08/2022 | Application Document No. | TR010032/APP/6.2 | | |
| Approved | SK | Date - 05/08/2022 | Drawing number | HE540039-CJV-ELS-SZP_ZZ000000_Z-DR-LV-00295A | | |



| | | | | | | |
|-----|--------|------------|---------------------|-------|--------|---------|
| P02 | S9 | 10/11/2023 | Deadline 9 | BB | SK | BF |
| P01 | S8 | 05/08/2022 | First Issued | BB | HP | SK |
| Rev | Status | Rev. Date | Purpose of revision | Drawn | Chck'd | Apprv'd |

For location see Figure 7.16 - Visual Effects Drawing with Representative Viewpoint and Photomontage Locations

Camera: Canon EOS 6D MkII
 Lens: Canon EF 50mm f/1.8 STM
 Equipment: Manfrotto MA 454 Micro Positioning Plate
 Manfrotto SBH-100 Ball Head

Winter Viewpoint:
 Date and Time: S-14
 05/03/2019 15:17

Visualisation Type: Type 3
 Projection Type: Cylindrical
 Enlargement Factor: 1.5
 Horizontal FOV: 56.5°

FL, Max Aperture: 50mm, 1.75
 Tripod Height: 1.5m
 Viewpoint Ground Height: 111.3m AOD
 Viewpoint Grid Reference: 568232E, 169606N

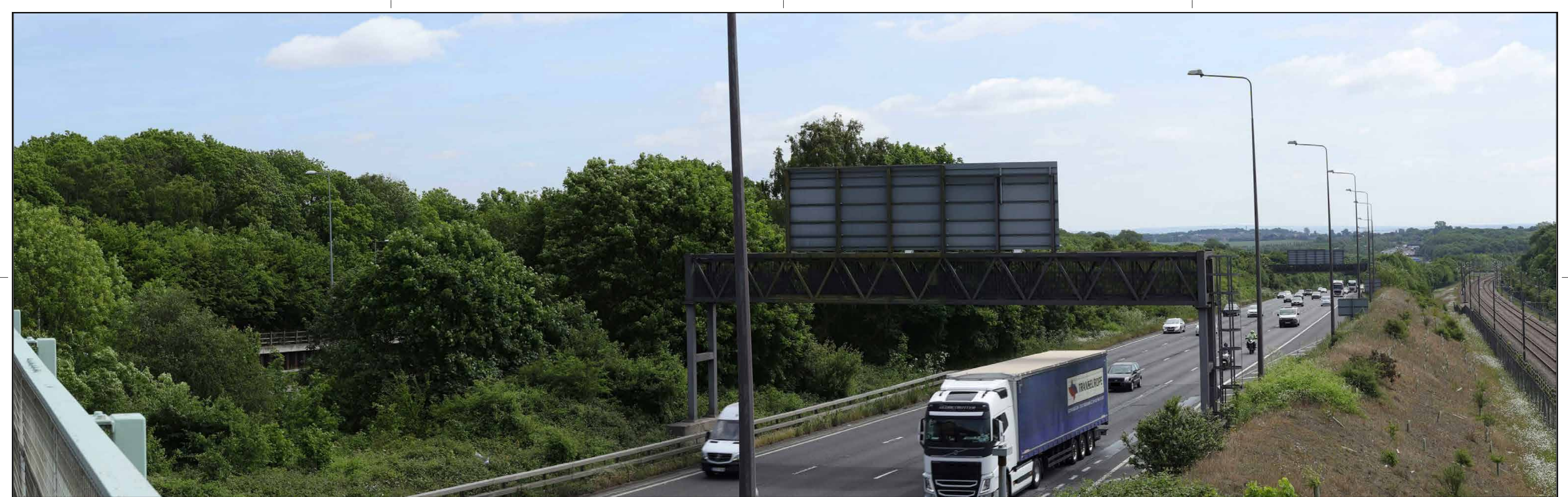
Distance to Order Limits: 0m
 View Direction (Centre of View): NE
 GPS Accuracy: 5m



LOWER THAMES CROSSING
 5th Floor Beaufort House
 15 St Botolph Street
 London EC3A 7DT

Project: LOWER THAMES CROSSING
 Drawing title: Figure 7.19
 Photomontage - Viewpoint S-14
 Winter Year 1
 Sheet 1 of 2

| | | | | |
|----------------|----|---|---|----------|
| Drawn | BB | Date - 10/11/2023 | Status | Revision |
| Checked | SK | Date - 10/11/2023 | S9 | P02 |
| Approved | BF | Date - 10/11/2023 | Application Document No. TR010032/APP/6.2 | |
| Drawing number | | HE540039-CJV-ELS-SZP_ZZ000000_Z-DR-LV-00295 | | |



| | | | | | | |
|-----|--------|------------|---------------------|-------|--------|---------|
| P01 | S8 | 05/08/2022 | First Issued | BB | HP | SK |
| Rev | Status | Rev. Date | Purpose of revision | Drawn | Chck'd | Apprv'd |

| | | | | | | | |
|--|--|--------------------------|------------------|---------------------------|------------------|---------------------------|----|
| For location see Figure 7.16 - Visual Effects Drawing with Representative Viewpoint and Photomontage Locations | | Summer Viewpoint: | S-14 | | | | |
| | | Date and Time: | 30/05/2019 10:37 | | | | |
| Camera: | Canon EOS 6D MkII | Visualisation Type: | Type 3 | FL, Max Aperture: | 50mm, 1.75 | Distance to Order Limits: | 0m |
| Lens: | Canon EF 50mm f/1.8 STM | Projection Type: | Cylindrical | Tripod Height: | 1.5m | View Direction: | NE |
| Equipment: | Manfrotto MA 454 Micro Positioning Plate | Enlargement Factor: | 1.5 | Viewpoint Ground Height: | 111.3m AOD | (Centre of View): | NE |
| | Manfrotto SBH-100 Ball Head | Horizontal FOV: | 56.5° | Viewpoint Grid Reference: | 568232E, 169606N | GPS Accuracy: | 5m |



LOWER THAMES CROSSING
 5th Floor Beaufort House
 15 St Botolph Street
 London EC3A 7DT

| | |
|---------------|--|
| Project | LOWER THAMES CROSSING |
| Drawing title | Figure 7.19 Baseline Photography - Viewpoint S-14 Summer Year 15 Sheet 2 of 2 |

| | | | | |
|----------------|----|--|---|----------|
| Drawn | BB | Date - 05/08/2022 | Status | Revision |
| Checked | HP | Date - 05/08/2022 | S8 | P01 |
| Approved | SK | Date - 05/08/2022 | Application Document No. TR010032/APP/6.2 | |
| Drawing number | | HE540039-CJV-ELS-SZP_ZZ000000_Z-DR-LV-00296A | | |



| P02 | S9 | 10/11/2023 | Deadline 9 | BB | SK | BF |
|-----|--------|------------|---------------------|-------|--------|---------|
| P01 | S8 | 05/08/2022 | First Issued | BB | HP | SK |
| Rev | Status | Rev. Date | Purpose of revision | Drawn | Chck'd | Apprv'd |

| | | | | | | | |
|--|--|--------------------------|------------------|---------------------------|------------------|---------------------------|----------------------|
| For location see Figure 7.16 - Visual Effects Drawing with Representative Viewpoint and Photomontage Locations | | Summer Viewpoint: | S-14 | | | | |
| | | Date and Time: | 30/05/2019 10:37 | | | | |
| Camera: | Canon EOS 6D MkII | Visualisation Type: | Type 3 | FL, Max Aperture: | 50mm, 1.75 | Distance to Order Limits: | 0m |
| Lens: | Canon EF 50mm 1/1.8 STM | Projection Type: | Cylindrical | Tripod Height: | 1.5m | View Direction | (Centre of View): NE |
| Equipment: | Manfrotto MA 454 Micro Positioning Plate | Enlargement Factor: | 1.5 | Viewpoint Ground Height: | 111.3m AOD | View Direction | (Centre of View): NE |
| | Manfrotto SBH-100 Ball Head | Horizontal FOV: | 56.5° | Viewpoint Grid Reference: | 568232E, 169606N | GPS Accuracy: | 5m |



LOWER THAMES CROSSING
 5th Floor Beaufort House
 15 St Botolph Street
 London EC3A 7DT

| | |
|---------------|--|
| Project | LOWER THAMES CROSSING |
| Drawing title | Figure 7.19 Photomontage - Viewpoint S-14 Summer Year 15 Sheet 2 of 2 |

| | | | | | | |
|---|----|-------------------|---|----|----------|-----|
| Drawn | BB | Date - 10/11/2023 | Status | S9 | Revision | P02 |
| Checked | SK | Date - 10/11/2023 | Application Document No. TR010032/APP/6.2 | | | |
| Approved | BF | Date - 10/11/2023 | Drawing number | | | |
| HE540039-CJV-ELS-SZP_ZZ000000_Z-DR-LV-00296 | | | | | | |



| | | | | | | |
|-----|--------|------------|---------------------|-------|--------|---------|
| Rev | Status | Rev. Date | Purpose of revision | Drawn | Chck'd | Apprv'd |
| P01 | S8 | 05/08/2022 | First Issued | BB | HP | SK |

For location see Figure 7.16 - Visual Effects Drawing with Representative Viewpoint and Photomontage Locations

Camera: Canon EOS 6D MkII
 Lens: Canon EF 50mm f/1.8 STM
 Equipment: Manfrotto MA 454 Micro Positioning Plate
 Manfrotto SBH-100 Ball Head

Winter Viewpoint: S-17
 Date and Time: 07/03/2019 12:09

Visualisation Type: Type 3
 Projection Type: Cylindrical
 Enlargement Factor: 1.5
 Horizontal FOV: 56.5°

FL, Max Aperture: 50mm, 1.75
 Tripod Height: 1.5m
 Viewpoint Ground Height: 89.9m AOD
 Viewpoint Grid Reference: 567389E, 169920N

Distance to Order Limits: 0m
 View Direction (Centre of View): S
 GPS Accuracy: 5m



LOWER THAMES CROSSING
 5th Floor Beaufort House
 15 St Botolph Street
 London EC3A 7DT

Project: LOWER THAMES CROSSING
 Drawing title: Figure 7.19
 Baseline Photography - Viewpoint S-17
 Winter Year 1
 Sheet 1 of 4

| | | | | |
|----------------|----|--|---|----------|
| Drawn | BB | Date - 05/08/2022 | Status | Revision |
| Checked | HP | Date - 05/08/2022 | S8 | P01 |
| Approved | SK | Date - 05/08/2022 | Application Document No. TR010032/APP/6.2 | |
| Drawing number | | HE540039-CJV-ELS-SZP_ZZ000000_Z-DR-LV-00297A | | |



| | | | | | | |
|-----|--------|------------|---------------------|-------|--------|---------|
| P02 | S9 | 10/11/2023 | Deadline 9 | BB | SK | BF |
| P01 | S8 | 05/08/2022 | First Issued | BB | HP | SK |
| Rev | Status | Rev. Date | Purpose of revision | Drawn | Chck'd | Apprv'd |

For location see Figure 7.16 - Visual Effects Drawing with Representative Viewpoint and Photomontage Locations

Camera: Canon EOS 6D MkII
 Lens: Canon EF 50mm f/1.8 STM
 Equipment: Manfrotto MA 454 Micro Positioning Plate
 Manfrotto SBH-100 Ball Head

Winter Viewpoint:
 Date and Time: S-17
 07/03/2019 12:09

Visualisation Type: Type 3
 Projection Type: Cylindrical
 Enlargement Factor: 1.5
 Horizontal FOV: 56.5°

FL, Max Aperture: 50mm, 1.75
 Tripod Height: 1.5m
 Viewpoint Ground Height: 89.9m AOD
 Viewpoint Grid Reference: 567389E, 169920N

Distance to Order Limits: 0m
 View Direction (Centre of View): S
 GPS Accuracy: 5m



LOWER THAMES CROSSING
 5th Floor Beaufort House
 15 St Botolph Street
 London EC3A 7DT

Project: LOWER THAMES CROSSING
 Drawing title: Figure 7.19
 Photomontage - Viewpoint S-17
 Winter Year 1
 Sheet 1 of 4

| | | | | |
|----------------|----|---|---|----------|
| Drawn | BB | Date - 10/11/2023 | Status | Revision |
| Checked | SK | Date - 10/11/2023 | S9 | P02 |
| Approved | BF | Date - 10/11/2023 | Application Document No. TR010032/APP/6.2 | |
| Drawing number | | HE540039-CJV-ELS-SZP_ZZ000000_Z-DR-LV-00297 | | |



| P01 | S8 | 05/08/2022 | First Issued | BB | HP | SK |
|-----|--------|------------|---------------------|-------|--------|---------|
| Rev | Status | Rev. Date | Purpose of revision | Drawn | Chck'd | Apprv'd |

| | | | | | | | |
|--|--|--------------------------|------------------|---------------------------|------------------|---------------------------|----|
| For location see Figure 7.16 - Visual Effects Drawing with Representative Viewpoint and Photomontage Locations | | Winter Viewpoint: | S-17 | | | | |
| | | Date and Time: | 07/03/2019 12:09 | | | | |
| Camera: | Canon EOS 6D MkII | Visualisation Type: | Type 3 | FL, Max Aperture: | 50mm, 1.75 | Distance to Order Limits: | 0m |
| Lens: | Canon EF 50mm f/1.8 STM | Projection Type: | Cylindrical | Tripod Height: | 1.5m | View Direction | S |
| Equipment: | Manfrotto MA 454 Micro Positioning Plate | Enlargement Factor: | 1.5 | Viewpoint Ground Height: | 89.9m AOD | (Centre of View): | S |
| | Manfrotto SBH-100 Ball Head | Horizontal FOV: | 56.5° | Viewpoint Grid Reference: | 567389E, 169920N | GPS Accuracy: | 5m |

Client

LOWER THAMES CROSSING
 5th Floor Beaufort House
 15 St Botolph Street
 London EC3A 7DT

| | |
|---------------|---|
| Project | LOWER THAMES CROSSING |
| Drawing title | Figure 7.19 Baseline Photography - Viewpoint S-17 Winter Year 1 Sheet 2 of 4 |

| | | | | | | |
|----------------|----|--|---|----|----------|-----|
| Drawn | BB | Date - 05/08/2022 | Status | S8 | Revision | P01 |
| Checked | HP | Date - 05/08/2022 | | | | |
| Approved | SK | Date - 05/08/2022 | Application Document No. TR010032/APP/6.2 | | | |
| Drawing number | | HE540039-CJV-ELS-SZP_ZZ000000_Z-DR-LV-00298A | | | | |



| | | | | | | |
|-----|--------|------------|---------------------|-------|--------|---------|
| P02 | S9 | 10/11/2023 | Deadline 9 | BB | SK | BF |
| P01 | S8 | 05/08/2022 | First Issued | BB | HP | SK |
| Rev | Status | Rev. Date | Purpose of revision | Drawn | Chck'd | Apprv'd |

For location see Figure 7.16 - Visual Effects Drawing with Representative Viewpoint and Photomontage Locations

Winter Viewpoint:
Date and Time: S-17 07/03/2019 12:09

Visualisation Type: Type 3
Projection Type: Cylindrical
Enlargement Factor: 1.5
Horizontal FOV: 56.5°

FL, Max Aperture: 50mm, 1.75
Tripped Height: 1.5m
Viewpoint Ground Height: 89.9m AOD
Viewpoint Grid Reference: 567389E, 169920N

Distance to Order Limits: 0m
View Direction (Centre of View): S
GPS Accuracy: 5m



LOWER THAMES CROSSING
5th Floor Beaufort House
15 St Botolph Street
London EC3A 7DT

Project: LOWER THAMES CROSSING
Drawing title: Figure 7.19
Photomontage - Viewpoint S-17
Winter Year 1
Sheet 2 of 4

| | | | | |
|----------------|----|-------------------|---|----------|
| Drawn | BB | Date - 10/11/2023 | Status | Revision |
| Checked | SK | Date - 10/11/2023 | S9 | P02 |
| Approved | BF | Date - 10/11/2023 | Application Document No. TR010032/APP/6.2 | |
| Drawing number | | | HE540039-CJV-ELS-SZP_ZZ000000_Z-DR-LV-00298 | |



| | | | | | | |
|-----|--------|------------|---------------------|-------|--------|---------|
| P01 | S8 | 05/08/2022 | First Issued | BB | HP | SK |
| Rev | Status | Rev. Date | Purpose of revision | Drawn | Chck'd | Apprv'd |

| | | | | | |
|--|--|--|-------------|-------------------------------------|------------------|
| For location see Figure 7.16 - Visual Effects Drawing with Representative Viewpoint and Photomontage Locations | | Summer Viewpoint: Date and Time: | | S-17 29/05/2019 16:44 | |
| Camera: | Canon EOS 6D MkII | Visualisation Type: | Type 3 | FL, Max Aperture: | 50mm, 1.75 |
| Lens: | Canon EF 50mm f/1.8 STM | Projection Type: | Cylindrical | Tripod Height: | 1.5m |
| Equipment: | Manfrotto MA 454 Micro Positioning Plate | Enlargement Factor: | 1.5 | Viewpoint Ground Height: | 89.9m AOD |
| | Manfrotto SBH-100 Ball Head | Horizontal FOV: | 56.5° | Viewpoint Grid Reference: | 567389E, 169920N |
| | | Distance to Order Limits: | 0m | View Direction (Centre of View): | S |
| | | | | GPS Accuracy: | 5m |



LOWER THAMES CROSSING
5th Floor Beaufort House
15 St Botolph Street
London EC3A 7DT

| | |
|---------------|--|
| Project | LOWER THAMES CROSSING |
| Drawing title | Figure 7.19 Baseline Photography - Viewpoint S-17 Summer Year 15 Sheet 3 of 4 |

| | | | | | | |
|--|----|-------------------|---|----|----------|-----|
| Drawn | BB | Date - 05/08/2022 | Status | S8 | Revision | P01 |
| Checked | HP | Date - 05/08/2022 | Application Document No. TR010032/APP/6.2 | | | |
| Approved | SK | Date - 05/08/2022 | Drawing number | | | |
| HE540039-CJV-ELS-SZP_ZZ000000_Z-DR-LV-00299A | | | | | | |



| | | | | | | |
|-----|--------|------------|---------------------|-------|--------|---------|
| P02 | S9 | 10/11/2023 | Deadline 9 | BB | SK | BF |
| P01 | S8 | 05/08/2022 | First Issued | BB | HP | SK |
| Rev | Status | Rev. Date | Purpose of revision | Drawn | Chck'd | Apprv'd |

| | | | | | | | |
|--|--|--------------------------|------------------|---------------------------|------------------|---------------------------|----|
| For location see Figure 7.16 - Visual Effects Drawing with Representative Viewpoint and Photomontage Locations | | Summer Viewpoint: | S-17 | | | | |
| | | Date and Time: | 29/05/2019 16:44 | | | | |
| Camera: | Canon EOS 6D MkII | Visualisation Type: | Type 3 | FL, Max Aperture: | 50mm, 1.75 | Distance to Order Limits: | 0m |
| Lens: | Canon EF 50mm f/1.8 STM | Projection Type: | Cylindrical | Tripod Height: | 1.5m | View Direction | S |
| Equipment: | Manfrotto MA 454 Micro Positioning Plate | Enlargement Factor: | 1.5 | Viewpoint Ground Height: | 89.9m AOD | (Centre of View): | S |
| | Manfrotto SBH-100 Ball Head | Horizontal FOV: | 56.5° | Viewpoint Grid Reference: | 567389E, 169920N | GPS Accuracy: | 5m |



LOWER THAMES CROSSING
 5th Floor Beaufort House
 15 St Botolph Street
 London EC3A 7DT

| | |
|---------------|--|
| Project | LOWER THAMES CROSSING |
| Drawing title | Figure 7.19 Photomontage - Viewpoint S-17 Summer Year 15 Sheet 3 of 4 |

| | | | | | | |
|----------------|----|---|---|----|----------|-----|
| Drawn | BB | Date - 10/11/2023 | Status | S9 | Revision | P02 |
| Checked | SK | Date - 10/11/2023 | | | | |
| Approved | BF | Date - 10/11/2023 | Application Document No. TR010032/APP/6.2 | | | |
| Drawing number | | HE540039-CJV-ELS-SZP_ZZ000000_Z-DR-LV-00299 | | | | |



| P01 | S8 | 05/08/2022 | First Issued | BB | HP | SK |
|-----|--------|------------|---------------------|-------|--------|---------|
| Rev | Status | Rev. Date | Purpose of revision | Drawn | Chck'd | Apprv'd |

| | | | | | | | |
|--|--|--------------------------|------------------|---------------------------|------------------|---------------------------|----|
| For location see Figure 7.16 - Visual Effects Drawing with Representative Viewpoint and Photomontage Locations | | Summer Viewpoint: | S-17 | | | | |
| | | Date and Time: | 29/05/2019 16:44 | | | | |
| Camera: | Canon EOS 6D MkII | Visualisation Type: | Type 3 | FL, Max Aperture: | 50mm, 1.75 | Distance to Order Limits: | 0m |
| Lens: | Canon EF 50mm f/1.8 STM | Projection Type: | Cylindrical | Tripod Height: | 1.5m | View Direction: | S |
| Equipment: | Manfrotto MA 454 Micro Positioning Plate | Enlargement Factor: | 1.5 | Viewpoint Ground Height: | 89.9m AOD | (Centre of View): | S |
| | Manfrotto SBH-100 Ball Head | Horizontal FOV: | 56.5° | Viewpoint Grid Reference: | 567389E, 169920N | GPS Accuracy: | 5m |



LOWER THAMES CROSSING
 5th Floor Beaufort House
 15 St Botolph Street
 London EC3A 7DT

| | |
|---------------|--|
| Project | LOWER THAMES CROSSING |
| Drawing title | Figure 7.19 Baseline Photography - Viewpoint S-17 Summer Year 15 Sheet 4 of 4 |

| | | | | | | |
|----------------|----|--|---|----|----------|-----|
| Drawn | BB | Date - 05/08/2022 | Status | S8 | Revision | P01 |
| Checked | HP | Date - 05/08/2022 | | | | |
| Approved | SK | Date - 05/08/2022 | Application Document No. TR010032/APP/6.2 | | | |
| Drawing number | | HE540039-CJV-ELS-SZP_ZZ000000_Z-DR-LV-00300A | | | | |



| P02 | S9 | 10/11/2023 | Deadline 9 | BB | SK | BF |
|-----|--------|------------|---------------------|-------|--------|---------|
| P01 | S8 | 05/08/2022 | First Issued | BB | HP | SK |
| Rev | Status | Rev. Date | Purpose of revision | Drawn | Chck'd | Apprv'd |

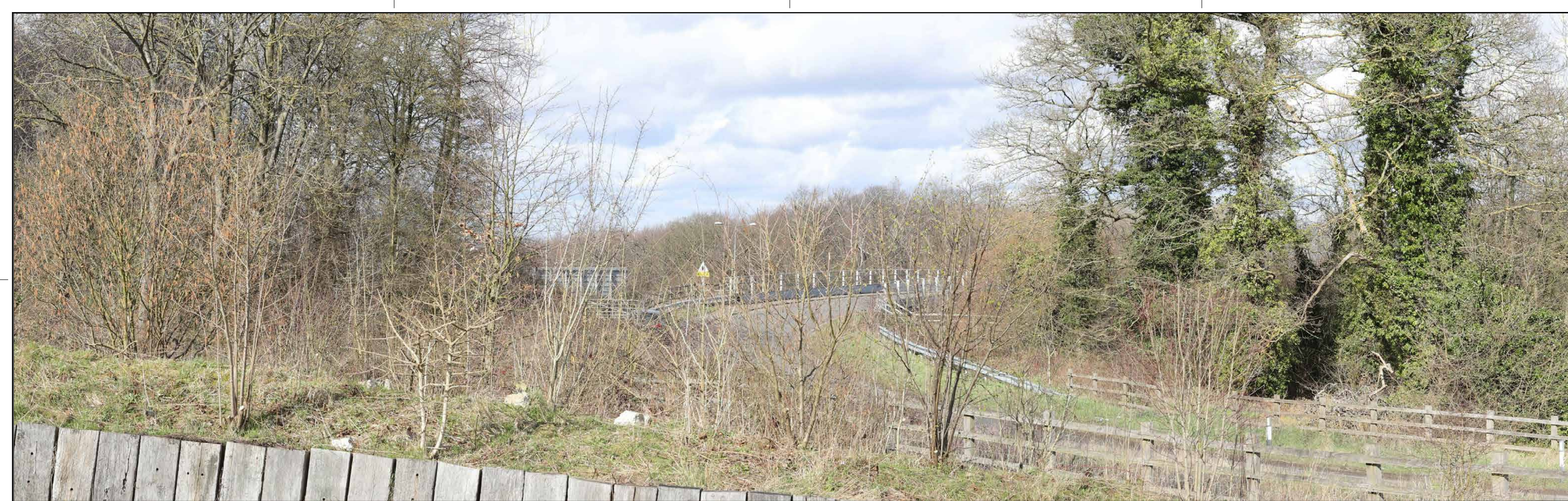
| | | | | | | | |
|--|--|--------------------------|------------------|---------------------------|------------------|---------------------------|----|
| For location see Figure 7.16 - Visual Effects Drawing with Representative Viewpoint and Photomontage Locations | | Summer Viewpoint: | S-17 | | | | |
| | | Date and Time: | 29/05/2019 16:44 | | | | |
| Camera: | Canon EOS 6D MkII | Visualisation Type: | Type 3 | FL, Max Aperture: | 50mm, 1.75 | Distance to Order Limits: | 0m |
| Lens: | Canon EF 50mm f/1.8 STM | Projection Type: | Cylindrical | Tripod Height: | 1.5m | View Direction | S |
| Equipment: | Manfrotto MA 454 Micro Positioning Plate | Enlargement Factor: | 1.5 | Viewpoint Ground Height: | 89.9m AOD | (Centre of View): | S |
| | Manfrotto SBH-100 Ball Head | Horizontal FOV: | 56.5° | Viewpoint Grid Reference: | 567389E, 169920N | GPS Accuracy: | 5m |



LOWER THAMES CROSSING
 5th Floor Beaufort House
 15 St Botolph Street
 London EC3A 7DT

| | |
|---------------|--|
| Project | LOWER THAMES CROSSING |
| Drawing title | Figure 7.19 Photomontage - Viewpoint S-17 Summer Year 15 Sheet 4 of 4 |

| | | | | | | |
|---|----|-------------------|---|----|----------|-----|
| Drawn | BB | Date - 10/11/2023 | Status | S9 | Revision | P02 |
| Checked | SK | Date - 10/11/2023 | Application Document No. TR010032/APP/6.2 | | | |
| Approved | BF | Date - 10/11/2023 | Drawing number | | | |
| HE540039-CJV-ELS-SZP_ZZ000000_Z-DR-LV-00300 | | | | | | |



| | | | | | | |
|-----|--------|------------|---------------------|-------|--------|---------|
| Rev | Status | Rev. Date | Purpose of revision | Drawn | Chck'd | Apprv'd |
| P01 | S8 | 05/08/2022 | First Issued | BB | HP | SK |

For location see Figure 7.16 - Visual Effects Drawing with Representative Viewpoint and Photomontage Locations

Camera: Canon EOS 6D MkII
 Lens: Canon EF 50mm f/1.8 STM
 Equipment: Manfrotto MA 454 Micro Positioning Plate
 Manfrotto SBH-100 Ball Head

Winter Viewpoint: S-18
 Date and Time: 07/03/2019 12:20

Visualisation Type: Type 3
 Projection Type: Cylindrical
 Enlargement Factor: 1.5
 Horizontal FOV: 56.5°

FL, Max Aperture: 50mm, 1.75
 Tripod Height: 1.5m
 Viewpoint Ground Height: 99.8m AOD
 Viewpoint Grid Reference: 567405E, 169718N

Distance to Order Limits: 0m
 View Direction (Centre of View): NW
 GPS Accuracy: 5m



LOWER THAMES CROSSING
 5th Floor Beaufort House
 15 St Botolph Street
 London EC3A 7DT

Project: LOWER THAMES CROSSING
 Drawing title: Figure 7.19
 Baseline Photography - Viewpoint S-18
 Winter Year 1
 Sheet 1 of 2

| | | | | |
|----------------|----|--|---|----------|
| Drawn | BB | Date - 05/08/2022 | Status | Revision |
| Checked | HP | Date - 05/08/2022 | S8 | P01 |
| Approved | SK | Date - 05/08/2022 | Application Document No. TR010032/APP/6.2 | |
| Drawing number | | HE540039-CJV-ELS-SZP_ZZ000000_Z-DR-LV-00301A | | |



| | | | | | | |
|-----|--------|------------|---------------------|-------|--------|---------|
| P02 | S9 | 10/11/2023 | Deadline 9 | BB | SK | BF |
| P01 | S8 | 05/08/2022 | First Issued | BB | HP | SK |
| Rev | Status | Rev. Date | Purpose of revision | Drawn | Chck'd | Apprv'd |

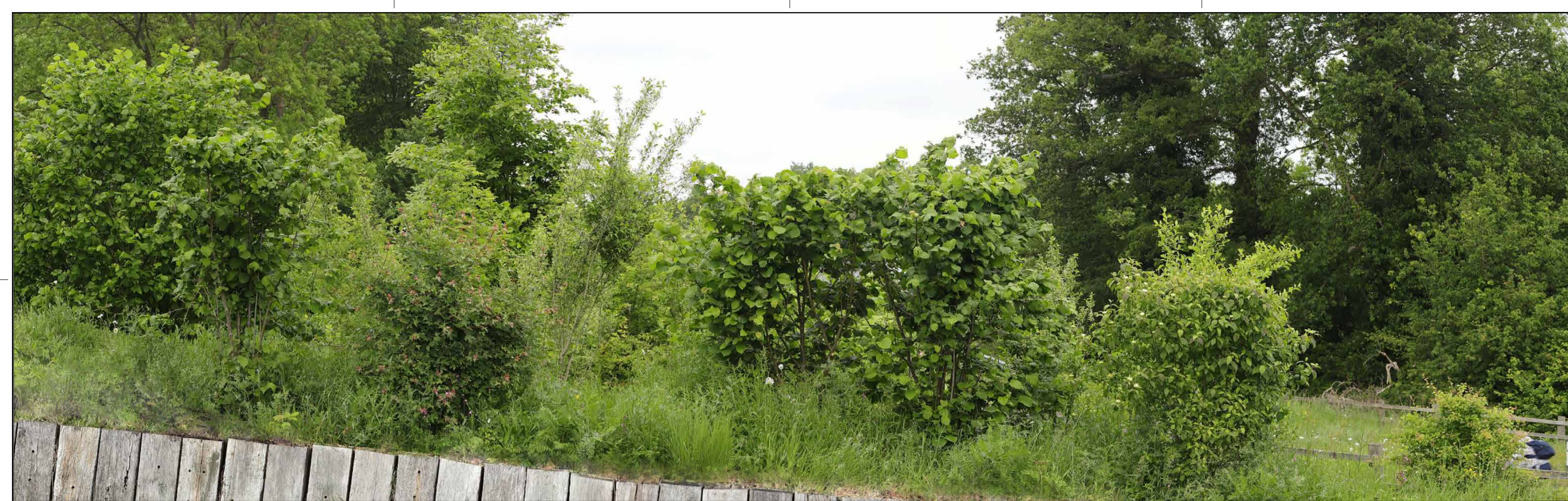
| | | | | | | | | | |
|--|---|--|--------------------------|---|---------------------------------------|--|---|---|----------------|
| For location see Figure 7.16 - Visual Effects Drawing with Representative Viewpoint and Photomontage Locations | | Winter Viewpoint: Date and Time: | S-18 07/03/2019 12:20 | Visualisation Type: Projection Type: Enlargement Factor: Horizontal FOV: | Type 3 Cylindrical 1.5 56.5° | FL, Max Aperture: Tripod Height: Viewpoint Ground Height: Viewpoint Grid Reference: | 50mm, 1.75 1.5m 99.8m AOD 567405E, 169718N | Distance to Order Limits: View Direction (Centre of View): GPS Accuracy: | 0m NW 5m |
| Camera: | Canon EOS 6D MkII | | | | | | | | |
| Lens: | Canon EF 50mm f/1.8 STM | | | | | | | | |
| Equipment: | Manfrotto MA 454 Micro Positioning Plate Manfrotto SBH-100 Ball Head | | | | | | | | |



LOWER THAMES CROSSING
5th Floor Beaufort House
15 St Botolph Street
London EC3A 7DT

| | |
|---------------|---|
| Project | LOWER THAMES CROSSING |
| Drawing title | Figure 7.19 Photomontage - Viewpoint S-18 Winter Year 1 Sheet 1 of 2 |

| | | | | | | |
|---|----|-------------------|---|----|----------|-----|
| Drawn | BB | Date - 10/11/2023 | Status | S9 | Revision | P02 |
| Checked | SK | Date - 10/11/2023 | Application Document No. TR010032/APP/6.2 | | | |
| Approved | BF | Date - 10/11/2023 | Drawing number | | | |
| HE540039-CJV-ELS-SZP_ZZ000000_Z-DR-LV-00301 | | | | | | |



For location see Figure 7.16 - Visual Effects Drawing with Representative Viewpoint and Photomontage Locations

Summer Viewpoint: S-18
Date and Time: 29/05/2019 16:21

Camera: Canon EOS 6D MkII
Lens: Canon EF 50mm f/1.8 STM
Equipment: Manfrotto MA 454 Micro Positioning Plate
Manfrotto SBH-100 Ball Head

Visualisation Type: Type 3
Projection Type: Cylindrical
Enlargement Factor: 1.5
Horizontal FOV: 56.5°

FL, Max Aperture: 50mm, 1.75
Tripod Height: 1.5m
Viewpoint Ground Height: 99.8m AOD
Viewpoint Grid Reference: 567405E, 169718N

Distance to Order Limits: 0m
View Direction (Centre of View): NW
GPS Accuracy: 5m



LOWER THAMES CROSSING
5th Floor Beaufort House
15 St Botolph Street
London EC3A 7DT

Project: LOWER THAMES CROSSING
Drawing title: Figure 7.19
Baseline Photography - Viewpoint S-18
Summer Year 15
Sheet 2 of 2

| | | | | | | |
|--|----|-------------------|---|----|----------|-----|
| Drawn | BB | Date - 05/08/2022 | Status | S8 | Revision | P01 |
| Checked | HP | Date - 05/08/2022 | Application Document No. TR010032/APP/6.2 | | | |
| Approved | SK | Date - 05/08/2022 | Drawing number | | | |
| HE540039-CJV-ELS-SZP_ZZ000000_Z-DR-LV-00302A | | | | | | |



| P01 | S8 | 05/08/2022 | First Issued | BB | HP | SK |
|-----|--------|------------|---------------------|-------|--------|---------|
| Rev | Status | Rev. Date | Purpose of revision | Drawn | Chck'd | Apprv'd |

| | | | | | | | |
|--|--|--------------------------|------------------|---------------------------|------------------|---------------------------|----|
| For location see Figure 7.16 - Visual Effects Drawing with Representative Viewpoint and Photomontage Locations | | Summer Viewpoint: | S-18 | | | | |
| | | Date and Time: | 29/05/2019 16:21 | | | | |
| Camera: | Canon EOS 6D MkII | Visualisation Type: | Type 3 | FL, Max Aperture: | 50mm, 1.75 | Distance to Order Limits: | 0m |
| Lens: | Canon EF 50mm f/1.8 STM | Projection Type: | Cylindrical | Tripod Height: | 1.5m | View Direction | NW |
| Equipment: | Manfrotto MA 454 Micro Positioning Plate | Enlargement Factor: | 1.5 | Viewpoint Ground Height: | 99.8m AOD | (Centre of View): | NW |
| | Manfrotto SBH-100 Ball Head | Horizontal FOV: | 56.5° | Viewpoint Grid Reference: | 567405E, 169718N | GPS Accuracy: | 5m |

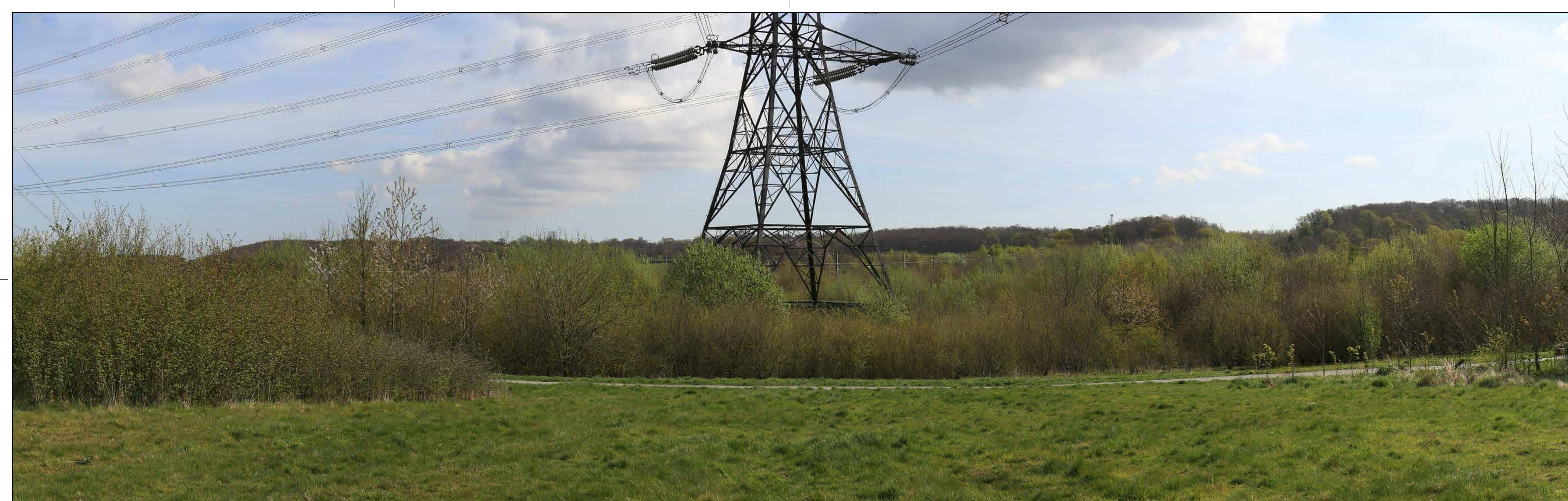
Client



LOWER THAMES CROSSING
 5th Floor Beaufort House
 15 St Botolph Street
 London EC3A 7DT

| | |
|---------------|--|
| Project | LOWER THAMES CROSSING |
| Drawing title | Figure 7.19 Photomontage - Viewpoint S-18 Summer Year 15 Sheet 2 of 2 |

| | | | | | | |
|----------------|----|---|---|----|----------|-----|
| Drawn | BB | Date - 05/08/2022 | Status | S8 | Revision | P01 |
| Checked | HP | Date - 05/08/2022 | | | | |
| Approved | SK | Date - 05/08/2022 | Application Document No. TR010032/APP/6.2 | | | |
| Drawing number | | HE540039-CJV-ELS-SZP_ZZ000000_Z-DR-LV-00302 | | | | |



| | | | | | | |
|-----|--------|------------|---------------------|-------|--------|---------|
| Rev | Status | Rev. Date | Purpose of revision | Drawn | Chck'd | Apprv'd |
| P01 | S8 | 05/08/2022 | First Issued | BB | HP | SK |

For location see Figure 7.16 - Visual Effects Drawing with Representative Viewpoint and Photomontage Locations

Camera: Canon EOS 6D MkII
 Lens: Canon EF 50mm f/1.8 STM
 Equipment: Manfrotto MA 454 Micro Positioning Plate
 Manfrotto SBH-100 Ball Head

Visualisation Type: Type 3
 Projection Type: Cylindrical
 Enlargement Factor: 1.5
 Horizontal FOV: 56.5°

Winter Viewpoint:
 Date and Time: S-20a
 14/04/2022 09:53

FL, Max Aperture: 50mm, 1.75
 Tripod Height: 1.5m
 Viewpoint Ground Height: 85.3m AOD
 Viewpoint Grid Reference: 566264E, 169859N

Distance to Order Limits: 0m
 View Direction (Centre of View): NE
 GPS Accuracy: 5m



Client
LOWER THAMES CROSSING
 5th Floor Beaufort House
 15 St Botolph Street
 London EC3A 7DT

Project
 LOWER THAMES CROSSING

Drawing title
 Figure 7.19
 Baseline Photography - Viewpoint S-20a
 Winter Year 1
 Sheet 1 of 2

| | | | | |
|---|----|-------------------|---|----------|
| Drawn | BB | Date - 05/08/2022 | Status | Revision |
| Checked | HP | Date - 05/08/2022 | S8 | P01 |
| Approved | SK | Date - 05/08/2022 | Application Document No. TR010032/APP/6.2 | |
| Drawing number HE540039-CJV-ELS-SZP_ZZ000000_Z-DR-LV-00303A | | | | |



| P02 | S9 | 10/11/2023 | Deadline 9 | BB | SK | BF |
|-----|--------|------------|---------------------|-------|--------|---------|
| P01 | S8 | 05/08/2022 | First Issued | BB | HP | SK |
| Rev | Status | Rev. Date | Purpose of revision | Drawn | Chck'd | Apprv'd |

For location see Figure 7.16 - Visual Effects Drawing with Representative Viewpoint and Photomontage Locations

Camera: Canon EOS 6D MkII
 Lens: Canon EF 50mm f/1.8 STM
 Equipment: Manfrotto MA 454 Micro Positioning Plate
 Manfrotto SBH-100 Ball Head

Winter Viewpoint:
 Date and Time: S-20a
 14/04/2022 09:53

Visualisation Type: Type 3
 Projection Type: Cylindrical
 Enlargement Factor: 1.5
 Horizontal FOV: 56.5°

FL, Max Aperture: 50mm, 1.75
 Tripod Height: 1.5m
 Viewpoint Ground Height: 85.3m AOD
 Viewpoint Grid Reference: 566264E, 169859N

Distance to Order Limits: 0m
 View Direction (Centre of View): NE
 GPS Accuracy: 5m



Client
LOWER THAMES CROSSING
 5th Floor Beaufort House
 15 St Botolph Street
 London EC3A 7DT

Project
 LOWER THAMES CROSSING

Drawing title
 Figure 7.19
 Photomontage - Viewpoint S-20a
 Winter Year 1
 Sheet 1 of 2

| | | | | |
|----------------|----|---|---|----------|
| Drawn | BB | Date - 10/11/2023 | Status | Revision |
| Checked | SK | Date - 10/11/2023 | S9 | P02 |
| Approved | BF | Date - 10/11/2023 | Application Document No. TR010032/APP/6.2 | |
| Drawing number | | HE540039-CJV-ELS-SZP_ZZ000000_Z-DR-LV-00303 | | |



| P01 | S8 | 05/08/2022 | First Issued | BB | HP | SK |
|-----|--------|------------|---------------------|-------|--------|---------|
| Rev | Status | Rev. Date | Purpose of revision | Drawn | Chck'd | Apprv'd |

For location see Figure 7.16 - Visual Effects Drawing with Representative Viewpoint and Photomontage Locations

Camera: Canon EOS 6D MkII
 Lens: Canon EF 50mm f/1.8 STM
 Equipment: Manfrotto MA 454 Micro Positioning Plate
 Manfrotto SBH-100 Ball Head

Summer Viewpoint:
 Date and Time: S-20a
 13/06/2022 08:31

Visualisation Type: Type 3
 Projection Type: Cylindrical
 Enlargement Factor: 1.5
 Horizontal FOV: 56.5°

FL, Max Aperture: 50mm, 1.75
 Tripod Height: 1.5m
 Viewpoint Ground Height: 85.3m AOD
 Viewpoint Grid Reference: 566264E, 169859N

Distance to Order Limits: 0m
 View Direction (Centre of View): NE
 GPS Accuracy: 5m



LOWER THAMES CROSSING
 5th Floor Beaufort House
 15 St Botolph Street
 London EC3A 7DT

Project: LOWER THAMES CROSSING
 Drawing title: Figure 7.19
 Baseline Photography - Viewpoint S-20a
 Summer Year 15
 Sheet 2 of 2

| | | | | |
|--|----|-------------------|---|----------|
| Drawn | BB | Date - 05/08/2022 | Status | Revision |
| Checked | HP | Date - 05/08/2022 | S8 | P01 |
| Approved | SK | Date - 05/08/2022 | Application Document No. TR010032/APP/6.2 | |
| Drawing number HE540039-CJV-ELS-SZP_ZZ000000_Z-DR-LV-00304A | | | | |



| P02 | S9 | 10/11/2023 | Deadline 9 | BB | SK | BF |
|-----|--------|------------|---------------------|-------|--------|---------|
| P01 | S8 | 05/08/2022 | First Issued | BB | HP | SK |
| Rev | Status | Rev. Date | Purpose of revision | Drawn | Chck'd | Apprv'd |

| | | | | | | | |
|--|--|--------------------------|------------------|--------------------------|------------|---------------------------|----------------------|
| For location see Figure 7.16 - Visual Effects Drawing with Representative Viewpoint and Photomontage Locations | | Summer Viewpoint: | S-20a | | | | |
| | | Date and Time: | 13/06/2022 08:31 | | | | |
| Camera: | Canon EOS 6D MkII | Visualisation Type: | Type 3 | FL, Max Aperture: | 50mm, 1.75 | Distance to Order Limits: | 0m |
| Lens: | Canon EF 50mm f/1.8 STM | Projection Type: | Cylindrical | Tripod Height: | 1.5m | View Direction | (Centre of View): NE |
| Equipment: | Manfrotto MA 454 Micro Positioning Plate | Enlargement Factor: | 1.5 | Viewpoint Ground Height: | 85.3m AOD | Viewpoint Grid Reference: | 566264E, 169859N |
| | Manfrotto SBH-100 Ball Head | Horizontal FOV: | 56.5° | | | GPS Accuracy: | 5m |



LOWER THAMES CROSSING
 5th Floor Beaufort House
 15 St Botolph Street
 London EC3A 7DT

| | |
|---------------|---|
| Project | LOWER THAMES CROSSING |
| Drawing title | Figure 7.19 Photomontage - Viewpoint S-20a Summer Year 15 Sheet 2 of 2 |

| | | | | |
|----------------|----|---|---|----------|
| Drawn | BB | Date - 10/11/2023 | Status | Revision |
| Checked | SK | Date - 10/11/2023 | S9 | P02 |
| Approved | BF | Date - 10/11/2023 | Application Document No. TR010032/APP/6.2 | |
| Drawing number | | HE540039-CJV-ELS-SZP_ZZ000000_Z-DR-LV-00304 | | |



| P01 | S8 | 05/08/2022 | First Issued | BB | HP | SK |
|-----|--------|------------|---------------------|-------|--------|---------|
| Rev | Status | Rev. Date | Purpose of revision | Drawn | Chck'd | Apprv'd |

For location see Figure 7.16 - Visual Effects Drawing with Representative Viewpoint and Photomontage Locations

Camera: Canon EOS 6D MkII
 Lens: Canon EF 50mm f/1.8 STM
 Equipment: Manfrotto MA 454 Micro Positioning Plate
 Manfrotto SBH-100 Ball Head

Winter Viewpoint:
 Date and Time: S-22
 07/03/2019 13:30

Visualisation Type: Type 3
 Projection Type: Cylindrical
 Enlargement Factor: 1.5
 Horizontal FOV: 56.5°

FL, Max Aperture: 50mm, 1.75
 Tripod Height: 1.65m
 Viewpoint Ground Height: 82.4m AOD
 Viewpoint Grid Reference: 565953E, 170432N

Distance to Order Limits: 0m
 View Direction (Centre of View): ESE
 GPS Accuracy: 5m



LOWER THAMES CROSSING
 5th Floor Beaufort House
 15 St Botolph Street
 London EC3A 7DT

Project: LOWER THAMES CROSSING
 Drawing title: Figure 7.19
 Baseline Photography - Viewpoint S-22
 Winter Year 1
 Sheet 1 of 2

| | | | | |
|--|----|-------------------|---|----------|
| Drawn | BB | Date - 05/08/2022 | Status | Revision |
| Checked | HP | Date - 05/08/2022 | S8 | P01 |
| Approved | SK | Date - 05/08/2022 | Application Document No. TR010032/APP/6.2 | |
| Drawing number HE540039-CJV-ELS-SZP_ZZ000000_Z-DR-LV-00305A | | | | |



| | | | | | | |
|-----|--------|------------|---------------------|-------|--------|---------|
| P02 | S9 | 10/11/2023 | Deadline 9 | BB | SK | BF |
| P01 | S8 | 05/08/2022 | First Issued | BB | HP | SK |
| Rev | Status | Rev. Date | Purpose of revision | Drawn | Chck'd | Apprv'd |

For location see Figure 7.16 - Visual Effects Drawing with Representative Viewpoint and Photomontage Locations

Camera: Canon EOS 6D MkII
 Lens: Canon EF 50mm f/1.8 STM
 Equipment: Manfrotto MA 454 Micro Positioning Plate
 Manfrotto SBH-100 Ball Head

Visualisation Type: Type 3
 Projection Type: Cylindrical
 Enlargement Factor: 1.5
 Horizontal FOV: 56.5°

Winter Viewpoint: S-22
 Date and Time: 07/03/2019 13:30

FL, Max Aperture: 50mm, 1.75
 Tripod Height: 1.65m
 Viewpoint Ground Height: 82.4m AOD
 Viewpoint Grid Reference: 565953E, 170432N

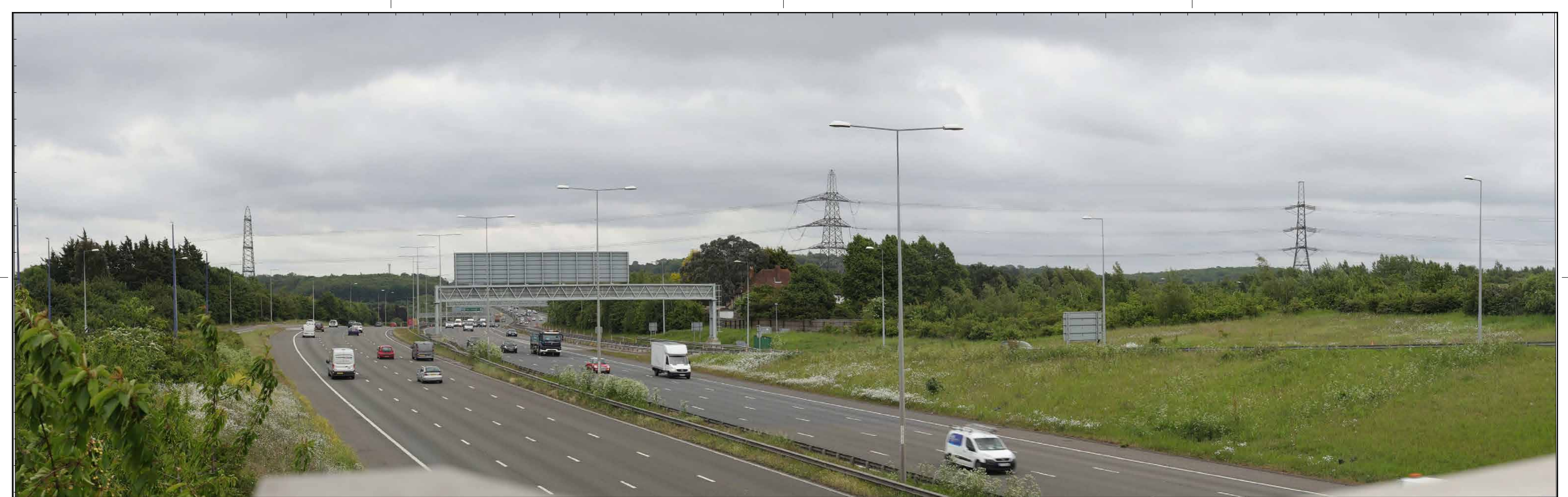
Distance to Order Limits: 0m
 View Direction (Centre of View): ESE
 GPS Accuracy: 5m



Client
national highways
 LOWER THAMES CROSSING
 5th Floor Beaufort House
 15 St Botolph Street
 London EC3A 7DT

Project LOWER THAMES CROSSING
 Drawing title Figure 7.19
 Photomontage - Viewpoint S-22
 Winter Year 1
 Sheet 1 of 2

| | | | | |
|--|----|-------------------|---|----------|
| Drawn | BB | Date - 10/11/2023 | Status | Revision |
| Checked | SK | Date - 10/11/2023 | S9 | P02 |
| Approved | BF | Date - 10/11/2023 | Application Document No. TR010032/APP/6.2 | |
| Drawing number HE540039-CJV-ELS-SZP_ZZ000000_Z-DR-LV-00305 | | | | |



For location see Figure 7.16 - Visual Effects Drawing with Representative Viewpoint and Photomontage Locations

Summer Viewpoint: S-22
Date and Time: 29/05/2019 15:33

Camera: Canon EOS 6D MkII
Lens: Canon EF 50mm f/1.8 STM
Equipment: Manfrotto MA 454 Micro Positioning Plate
Manfrotto SBH-100 Ball Head

Visualisation Type: Type 3
Projection Type: Cylindrical
Enlargement Factor: 1.5
Horizontal FOV: 56.5°

FL, Max Aperture: 50mm, 1.75
Tripod Height: 1.65m
Viewpoint Ground Height: 82.4m AOD
Viewpoint Grid Reference: 565953E, 170432N

Distance to Order Limits: 0m
View Direction (Centre of View): ESE
GPS Accuracy: 5m



LOWER THAMES CROSSING
5th Floor Beaufort House
15 St Botolph Street
London EC3A 7DT

Project: LOWER THAMES CROSSING
Drawing title: Figure 7.19
Baseline Photography - Viewpoint S-22
Summer Year 15
Sheet 2 of 2

| | | | | |
|--|----|-------------------|---|----------|
| Drawn | BB | Date - 05/08/2022 | Status | Revision |
| Checked | HP | Date - 05/08/2022 | S8 | P01 |
| Approved | SK | Date - 05/08/2022 | Application Document No. TR010032/APP/6.2 | |
| Drawing number HE540039-CJV-ELS-SZP_ZZ000000_Z-DR-LV-00306A | | | | |

| | | | | | | |
|-----|--------|------------|---------------------|-------|--------|---------|
| P01 | S8 | 05/08/2022 | First Issued | BB | HP | SK |
| Rev | Status | Rev. Date | Purpose of revision | Drawn | Chck'd | Apprv'd |



| P01 | S8 | 05/08/2022 | First Issued | BB | HP | SK |
|-----|--------|------------|---------------------|-------|--------|---------|
| Rev | Status | Rev. Date | Purpose of revision | Drawn | Chck'd | Apprv'd |

For location see Figure 7.16 - Visual Effects Drawing with Representative Viewpoint and Photomontage Locations

Camera: Canon EOS 6D MkII
 Lens: Canon EF 50mm f/1.8 STM
 Equipment: Manfrotto MA 454 Micro Positioning Plate
 Manfrotto SBH-100 Ball Head

Summer Viewpoint:
 Date and Time: S-22
 29/05/2019 15:33

Visualisation Type: Type 3
 Projection Type: Cylindrical
 Enlargement Factor: 1.5
 Horizontal FOV: 56.5°

FL, Max Aperture: 50mm, 1.75
 Tripod Height: 1.65m
 Viewpoint Ground Height: 82.4m AOD
 Viewpoint Grid Reference: 565953E, 170432N

Distance to Order Limits: 0m
 View Direction (Centre of View): ESE
 GPS Accuracy: 5m

Client



LOWER THAMES CROSSING
 5th Floor Beaufort House
 15 St Botolph Street
 London EC3A 7DT

Project LOWER THAMES CROSSING
 Drawing title Figure 7.19
 Photomontage - Viewpoint S-22
 Summer Year 15
 Sheet 2 of 2

| | | | | |
|---|----|-------------------|---|----------|
| Drawn | BB | Date - 05/08/2022 | Status | Revision |
| Checked | HP | Date - 05/08/2022 | S8 | P01 |
| Approved | SK | Date - 05/08/2022 | Application Document No. TR010032/APP/6.2 | |
| Drawing number HE540039-CJV-ELS-SZP_ZZ000000_Z-DR-LV-00306 | | | | |

If you need help accessing this or any other National Highways information, please call **0300 123 5000** and we will help you.

© Crown copyright 2023.

You may re-use this information (not including logos) free of charge in any format or medium, under the terms of the Open Government Licence. To view this licence:

visit www.nationalarchives.gov.uk/doc/open-government-licence/

write to the **Information Policy Team, The National Archives, Kew, London TW9 4DU**, or email psi@nationalarchives.gsi.gov.uk.

Mapping (where present): © Crown copyright and database rights 2023 OS 100030649. You are permitted to use this data solely to enable you to respond to, or interact with, the organisation that provided you with the data. You are not permitted to copy, sub-licence, distribute or sell any of this data to third parties in any form.

If you have any enquiries about this publication email info@nationalhighways.co.uk or call **0300 123 5000***.

*Calls to 03 numbers cost no more than a national rate call to an 01 or 02 number and must count towards any inclusive minutes in the same way as 01 and 02 calls.

These rules apply to calls from any type of line including mobile, BT, other fixed line or payphone. Calls may be recorded or monitored.

Printed on paper from well-managed forests and other controlled sources when issued directly by National Highways.

Registered office Bridge House, 1 Walnut Tree Close, Guildford GU1 4LZ

National Highways Limited registered in England and Wales number 09346363